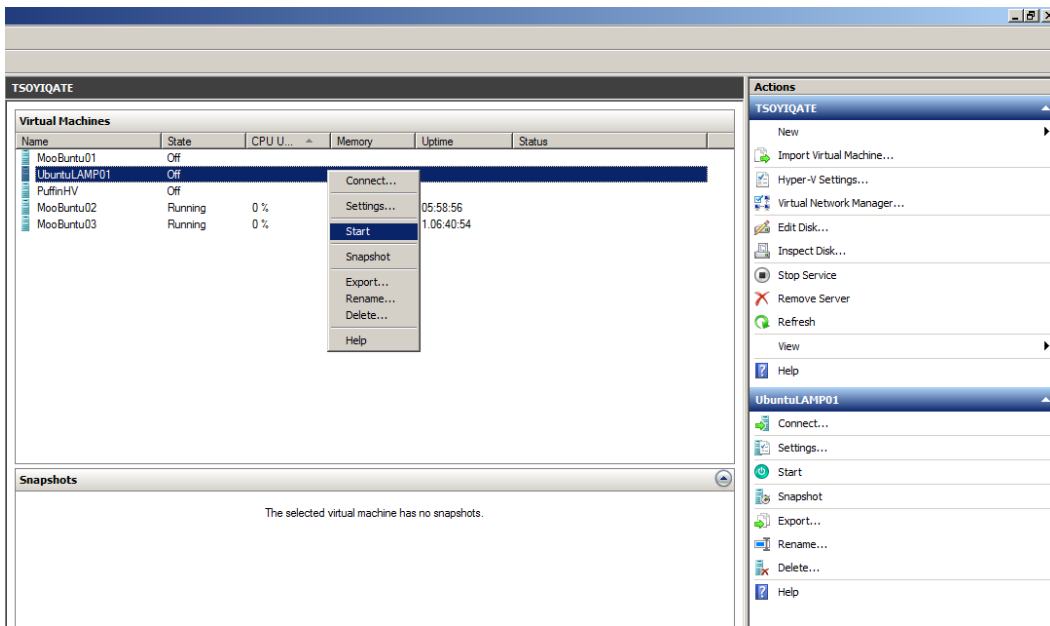


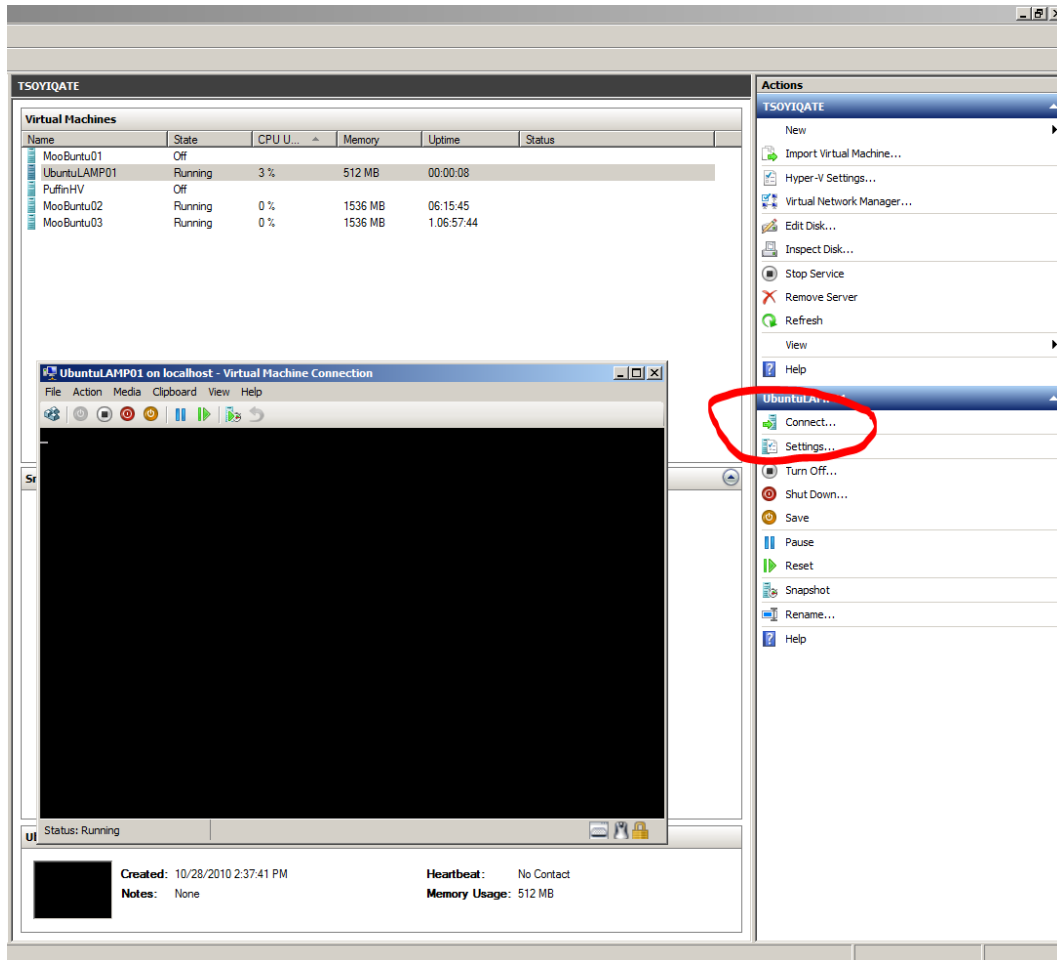
# Virtual Ubuntu LAMP Server - Install Ubuntu Server

Installing the server is relatively easy. Once you start your configured virtual machine and connect to your virtual machine in Hyper-V, you basically let the install process work by itself. All the screen shots are below. Step directions are given for any area where you might have a problem.

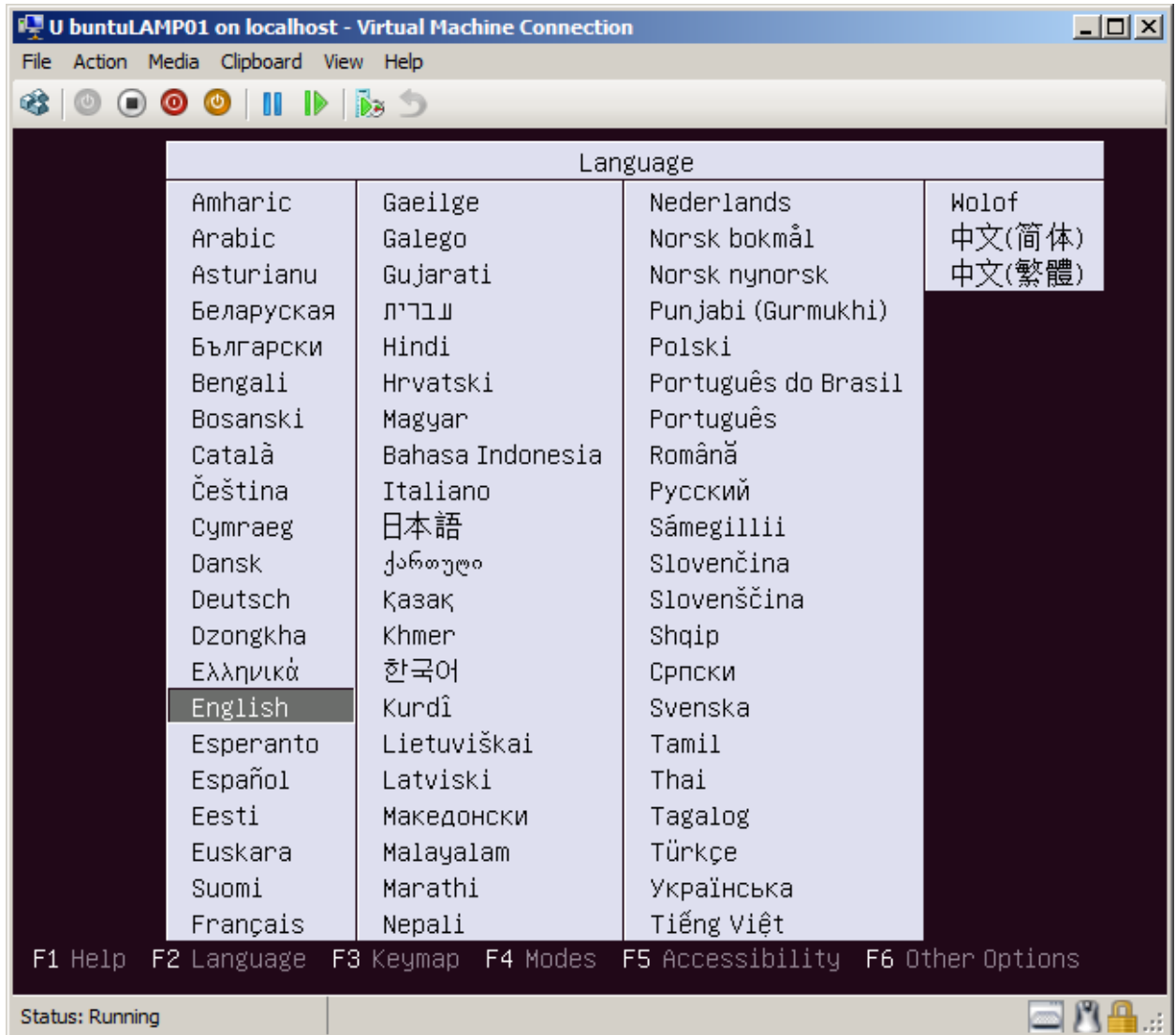
1. In Hyper-V highlight the virtual machine you configured. Right click on your highlighted machine and Click Start to start your new virtual machine.



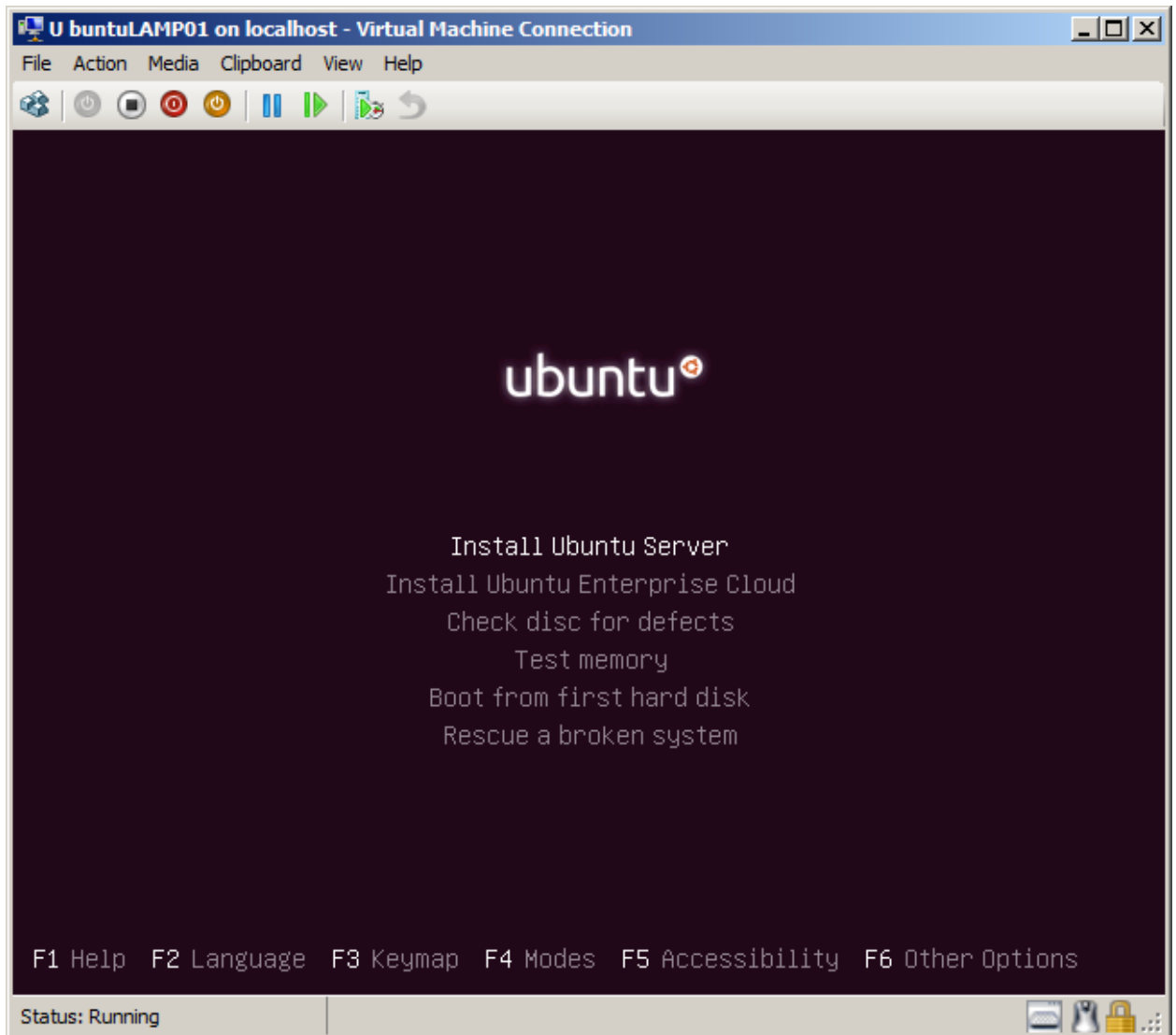
2. Once the virtual machine is started, click on Connect to open up a window that so that you can make choices when you install your Ubuntu Lamp Server

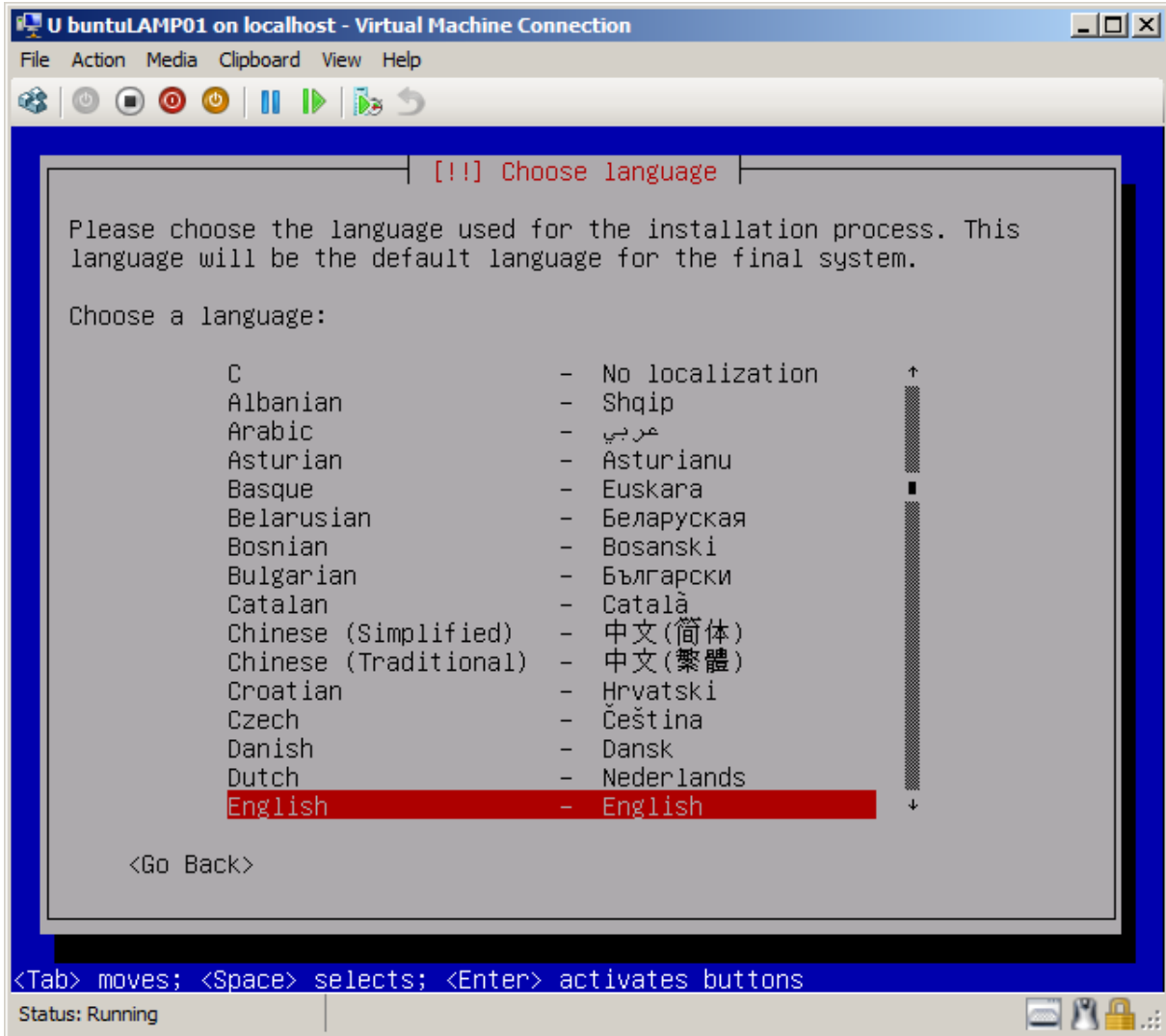


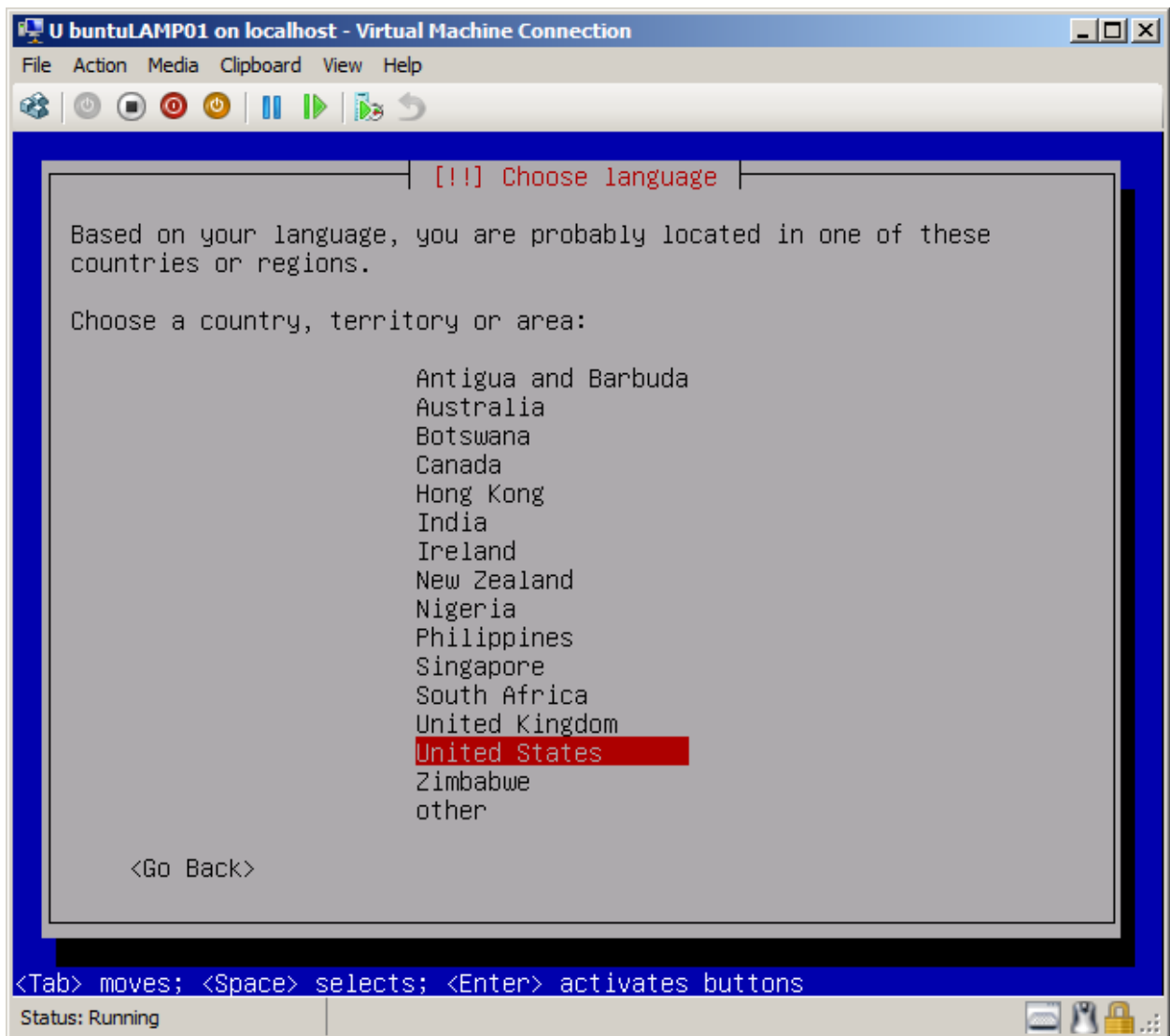
3. After your Ubuntu Server installation starts, choose the language of your choice.



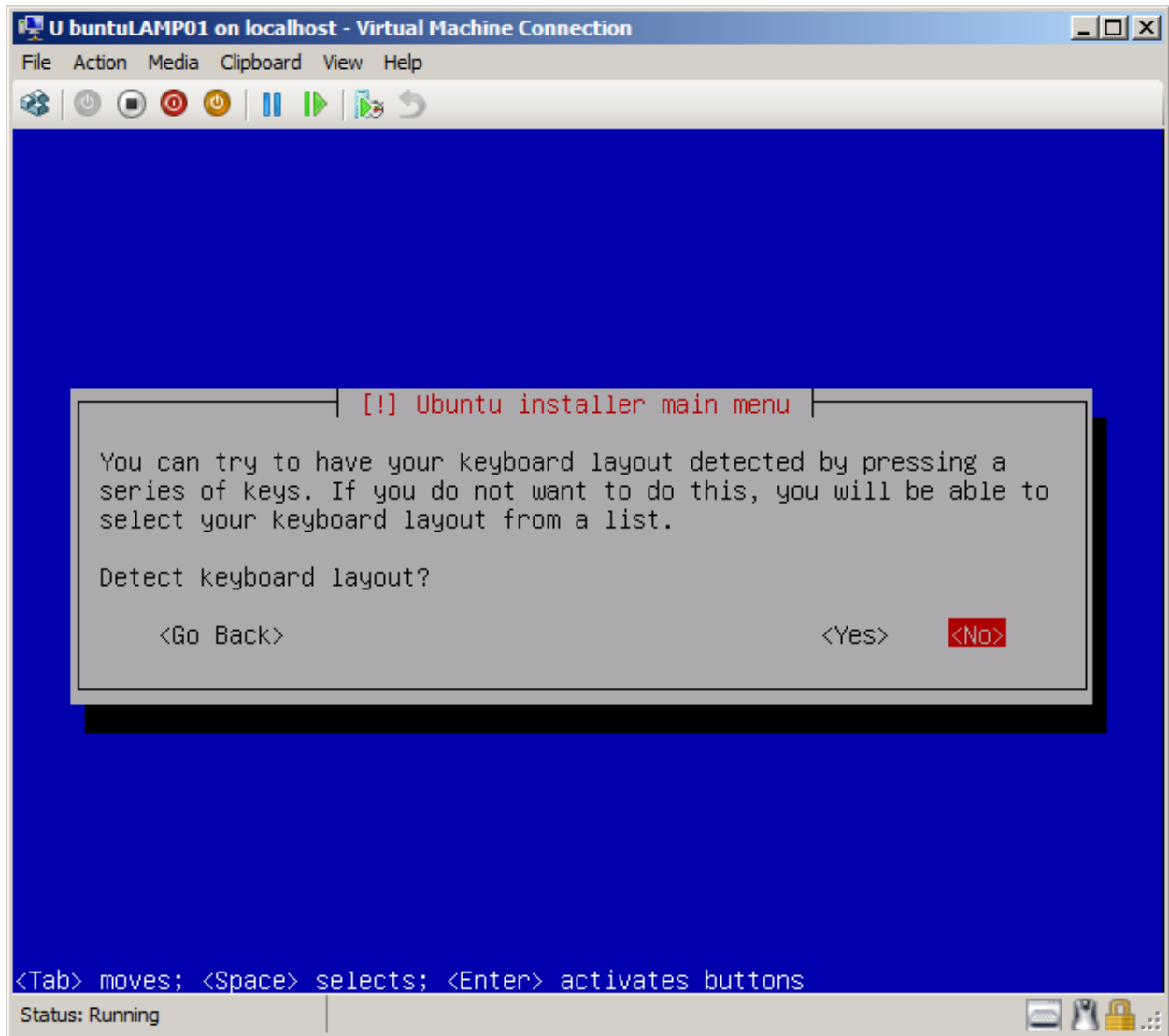
4. Make sure *Install Ubuntu Server* is selected and click return.

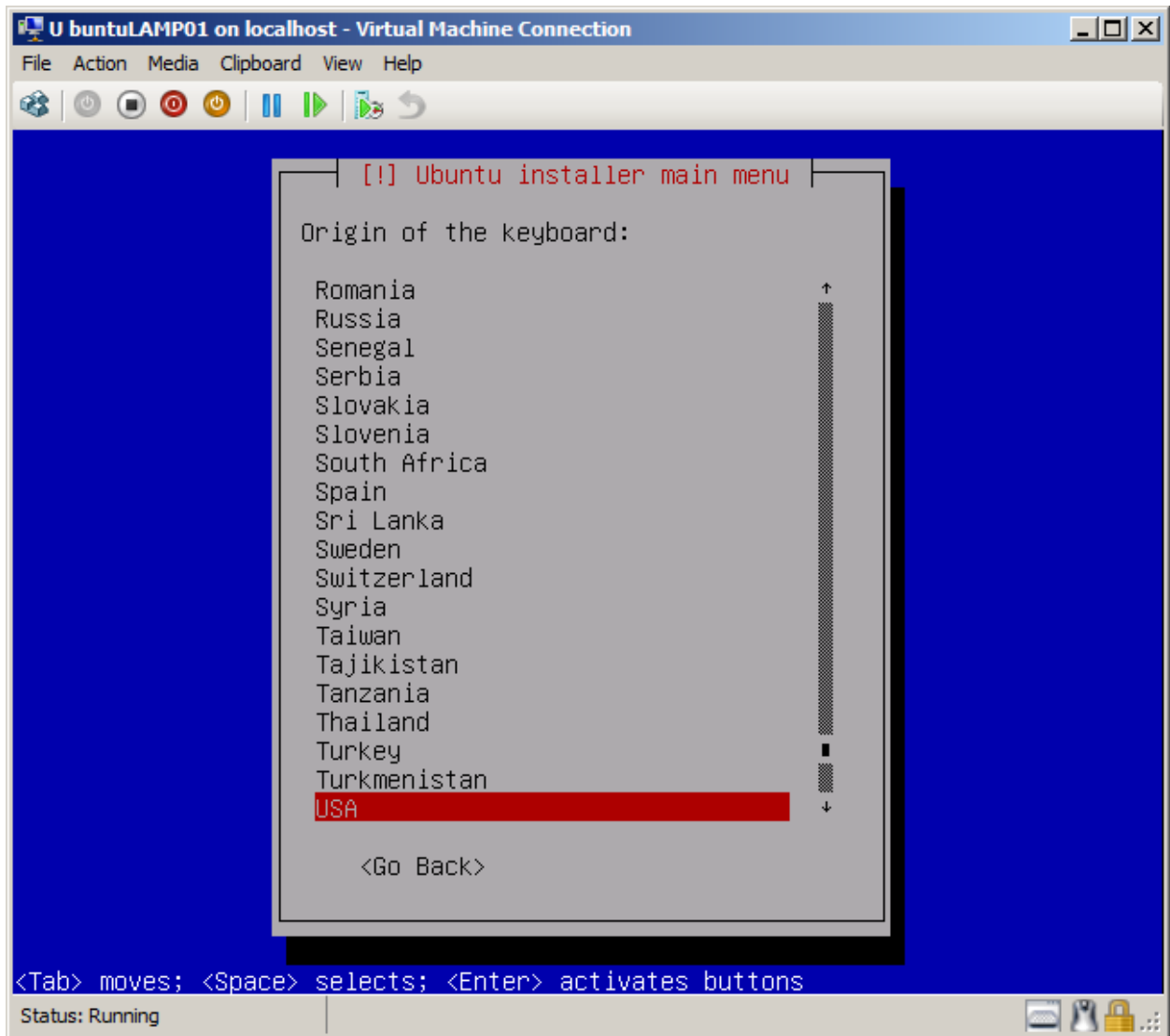




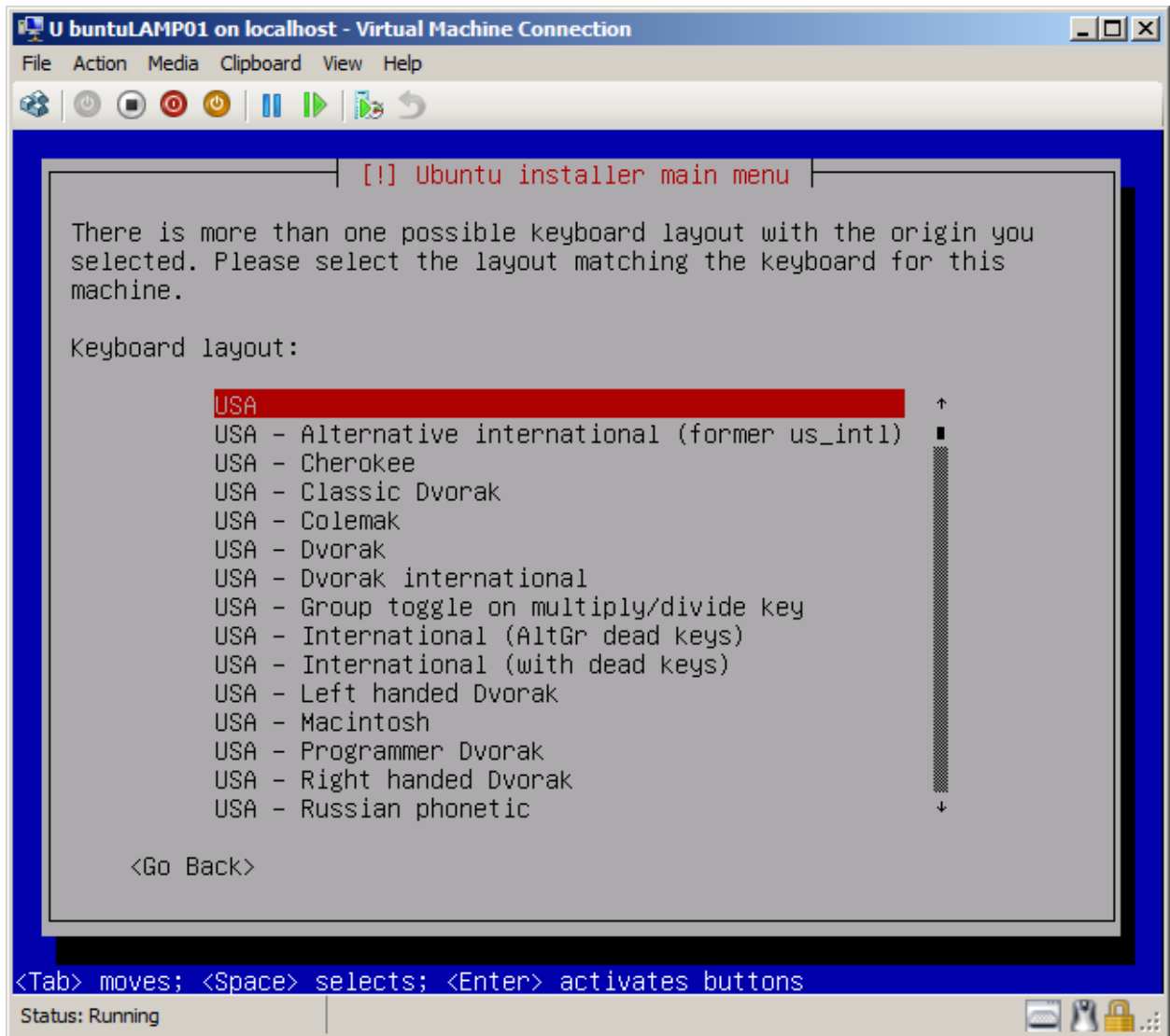


5. When asked to have your keyboard layout detected is usually better to use the Tab key to highlight **NO** unless you have a special keyboard layout.

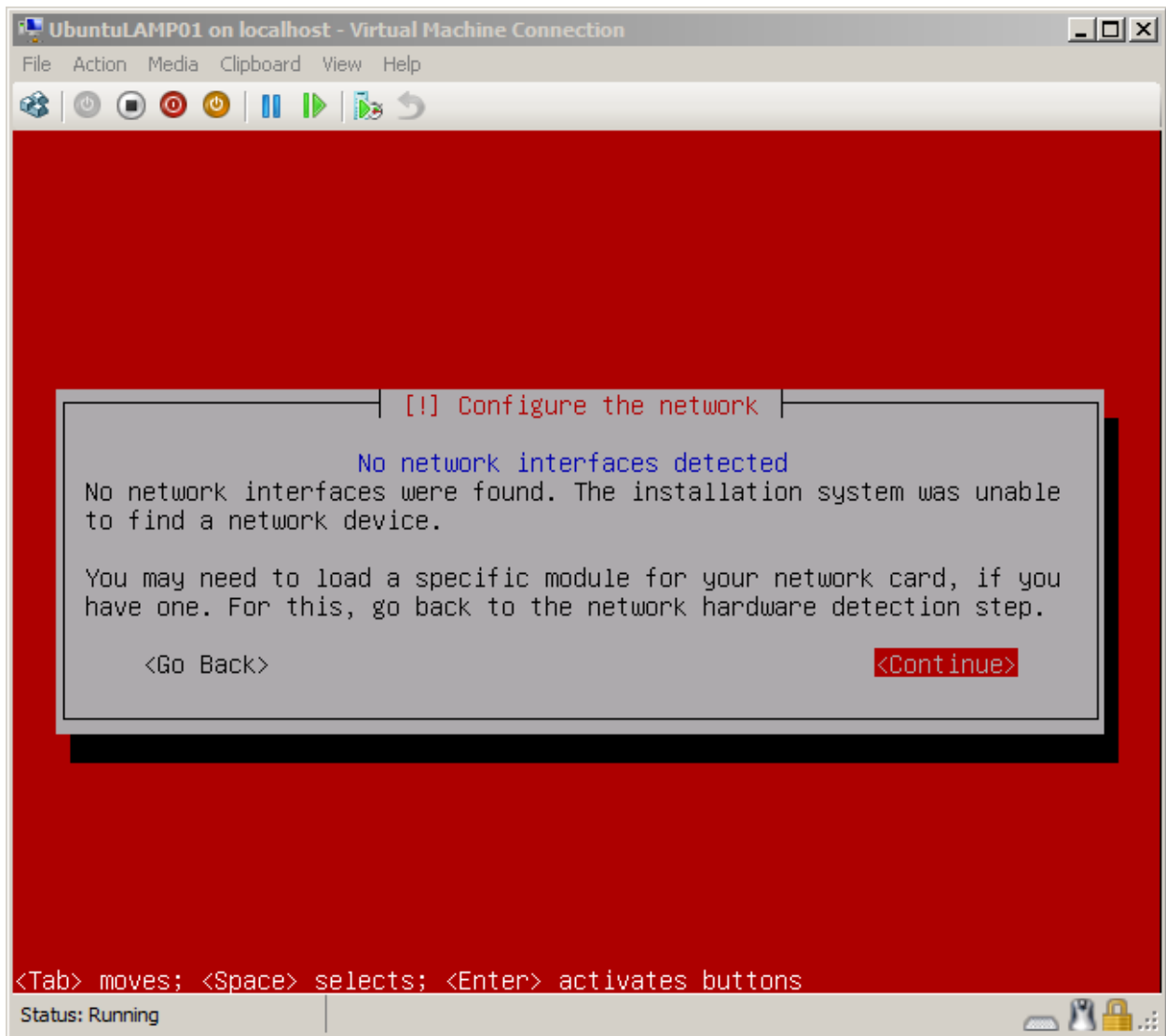




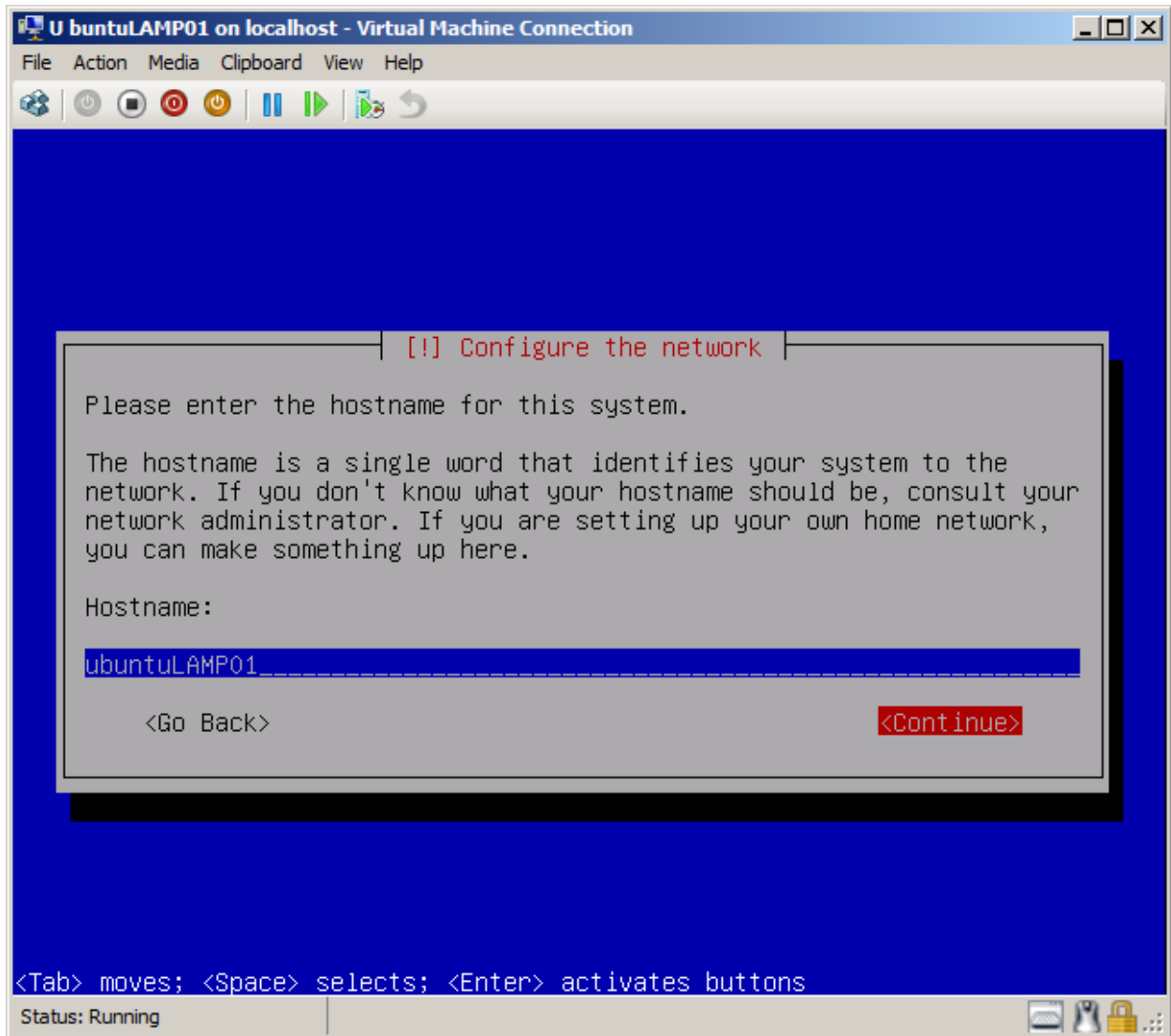


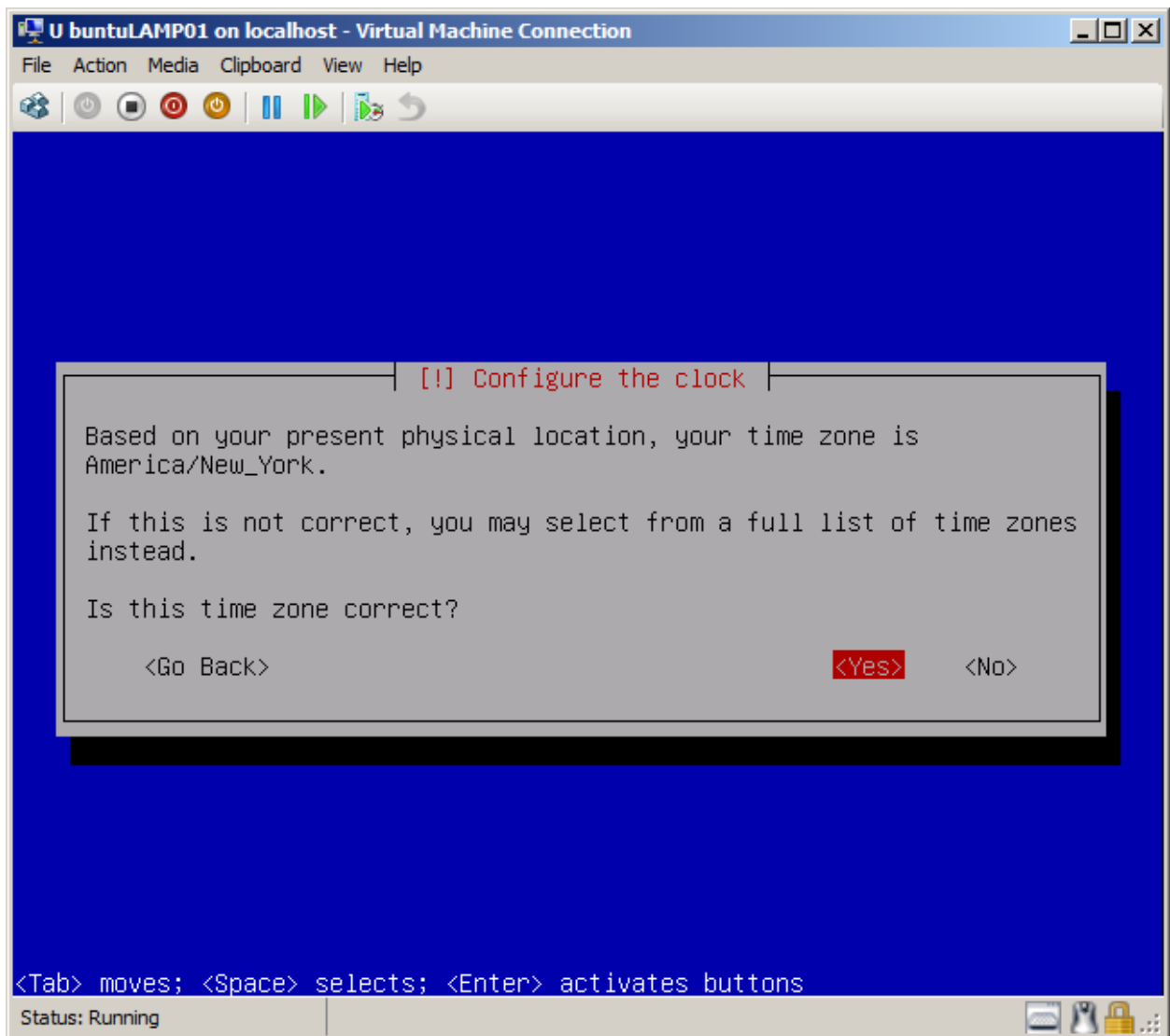


- The Ubuntu installer will note that there are no network interfaces connected. Don't worry about this for now. You will be asked to reconfigure your network adapter later. This is one area where Ubuntu and Hyper-V don't play together nicely.

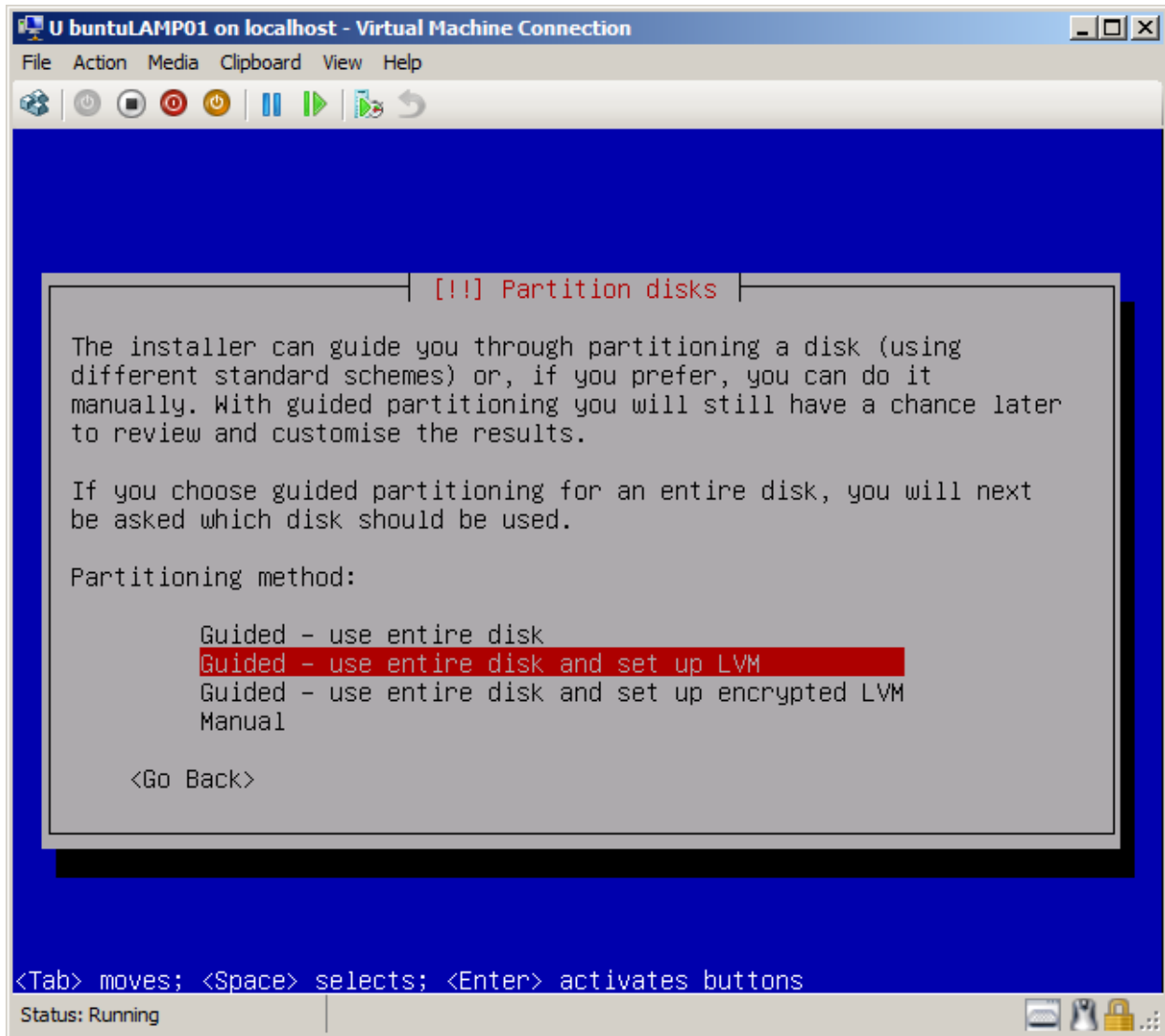


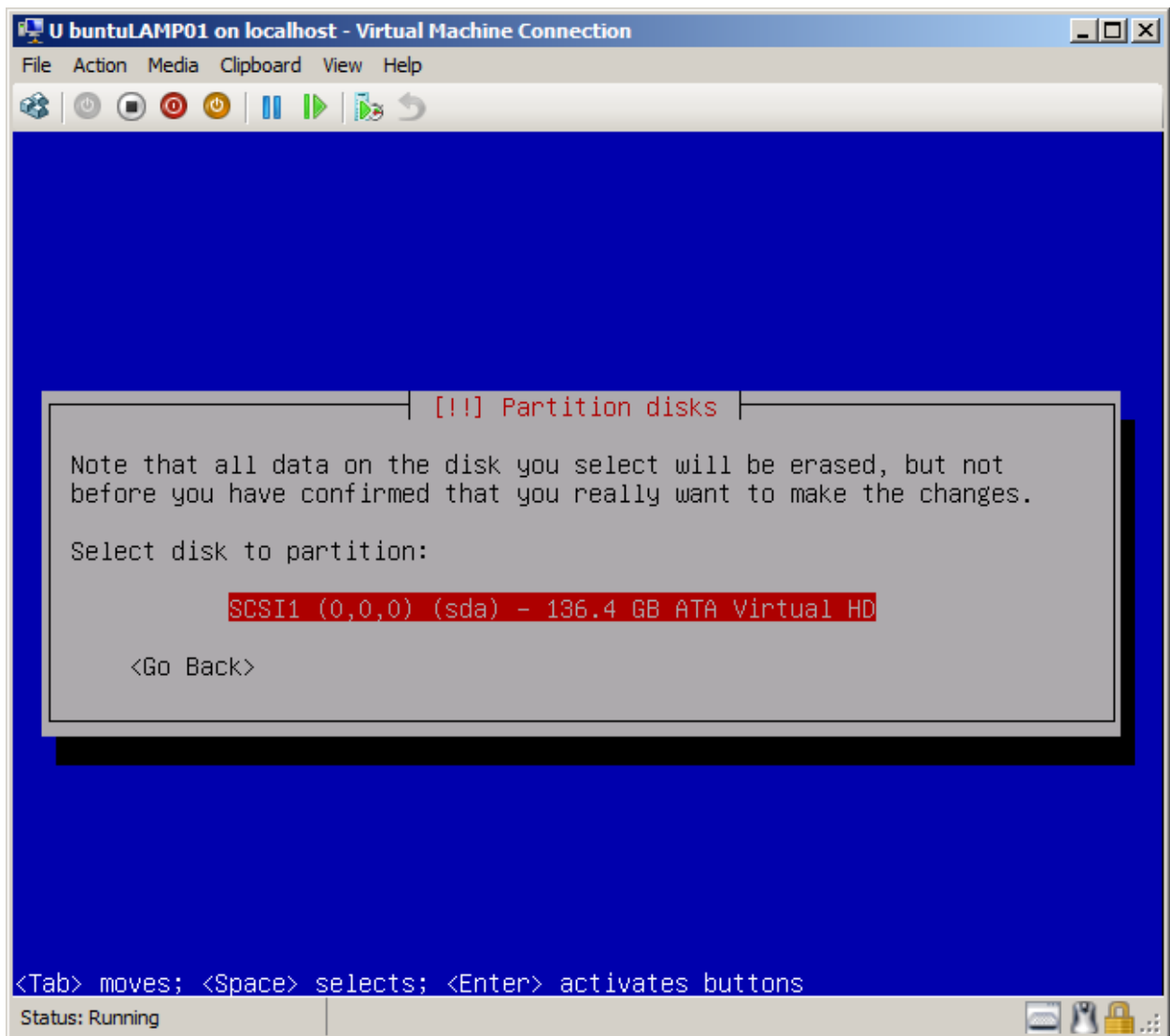
7. Next you will have to enter your hostname. The hostname is a unique name for your machine on your local area network- LAN.



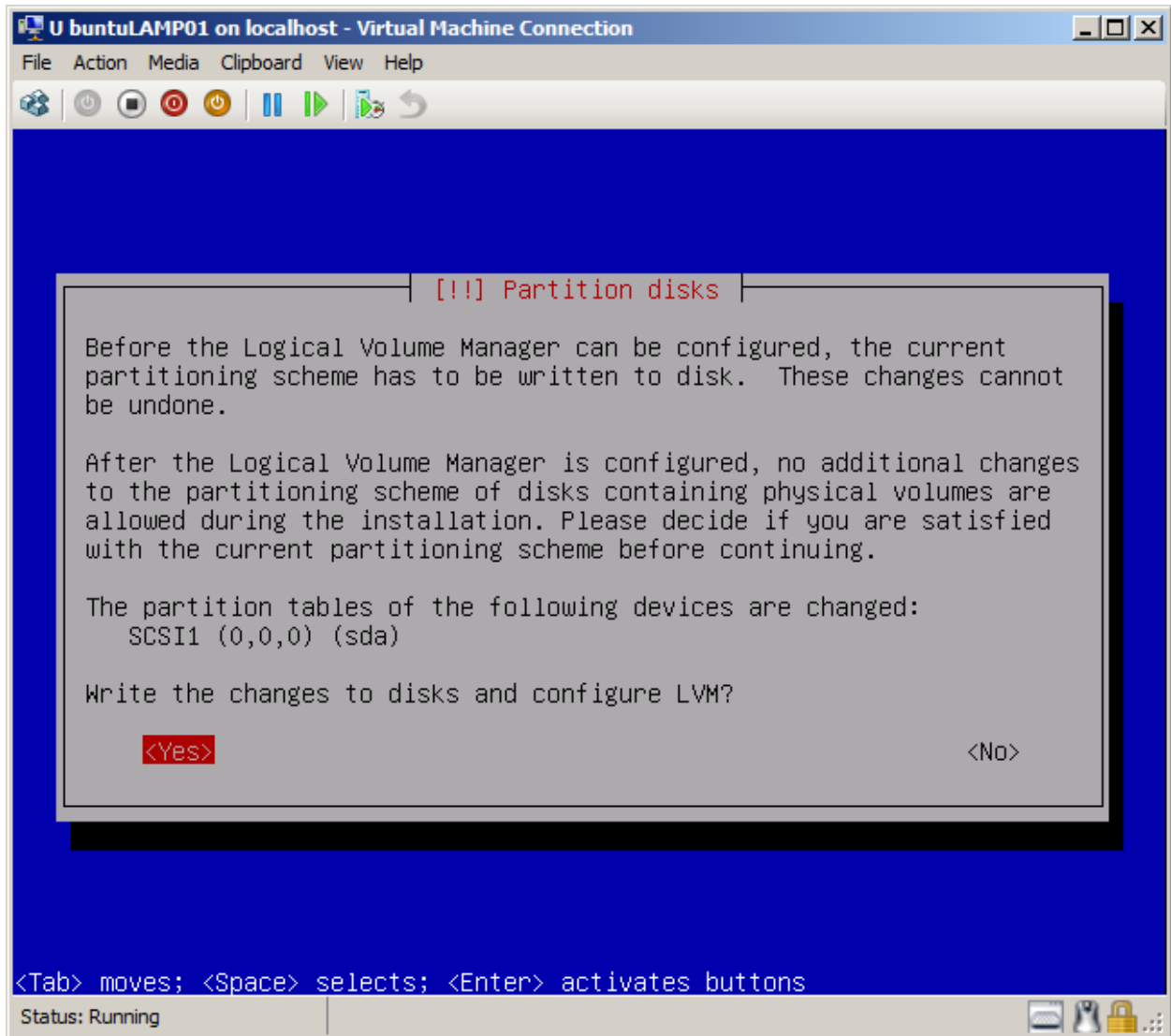


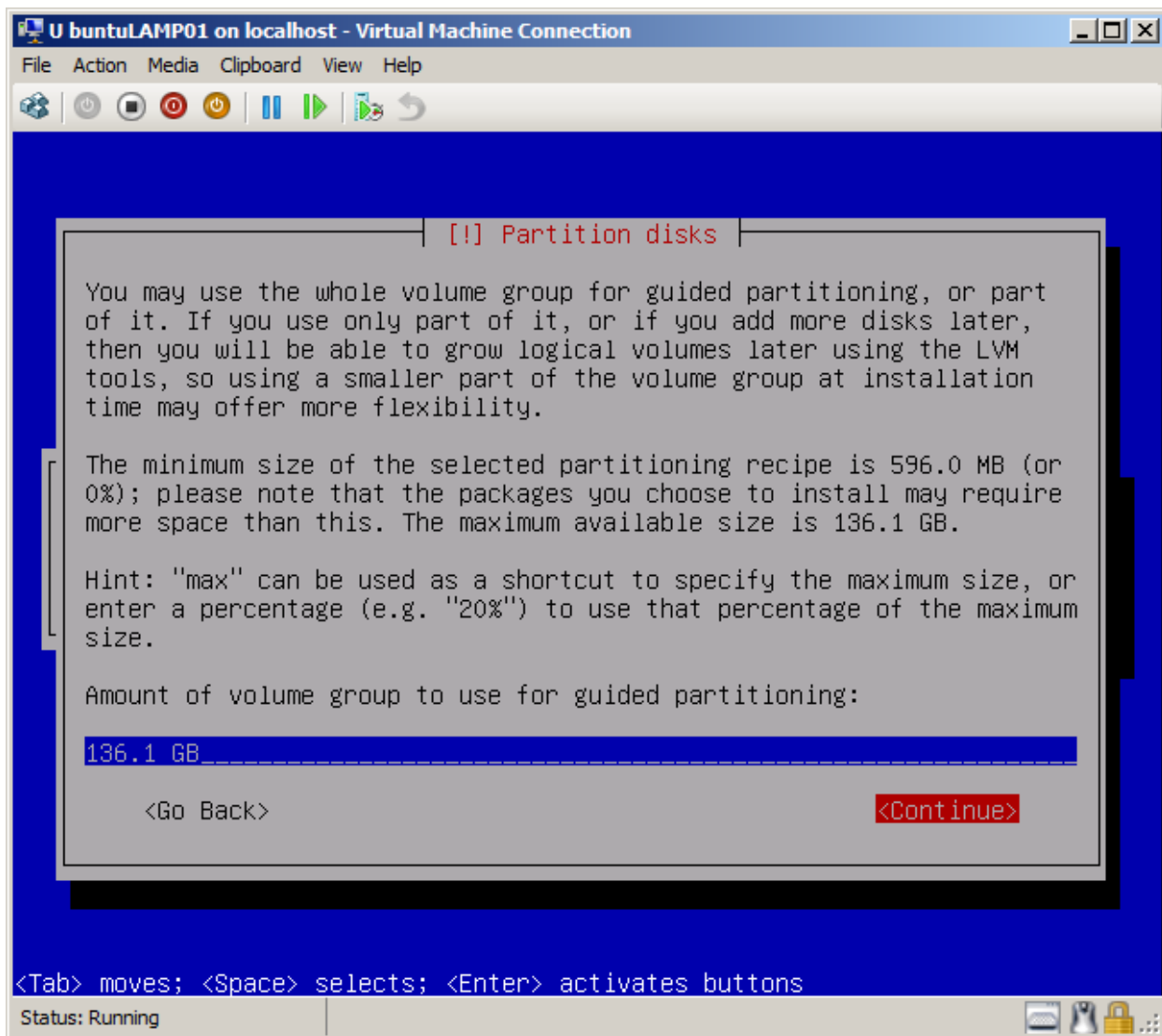
8. When asked what type of disk partitioning to use, your best bet is to select *Guided - use entire disk and set up LVM*. LVM stands for logical volume manager and allows you to resize your disk partitions as needed in the future.





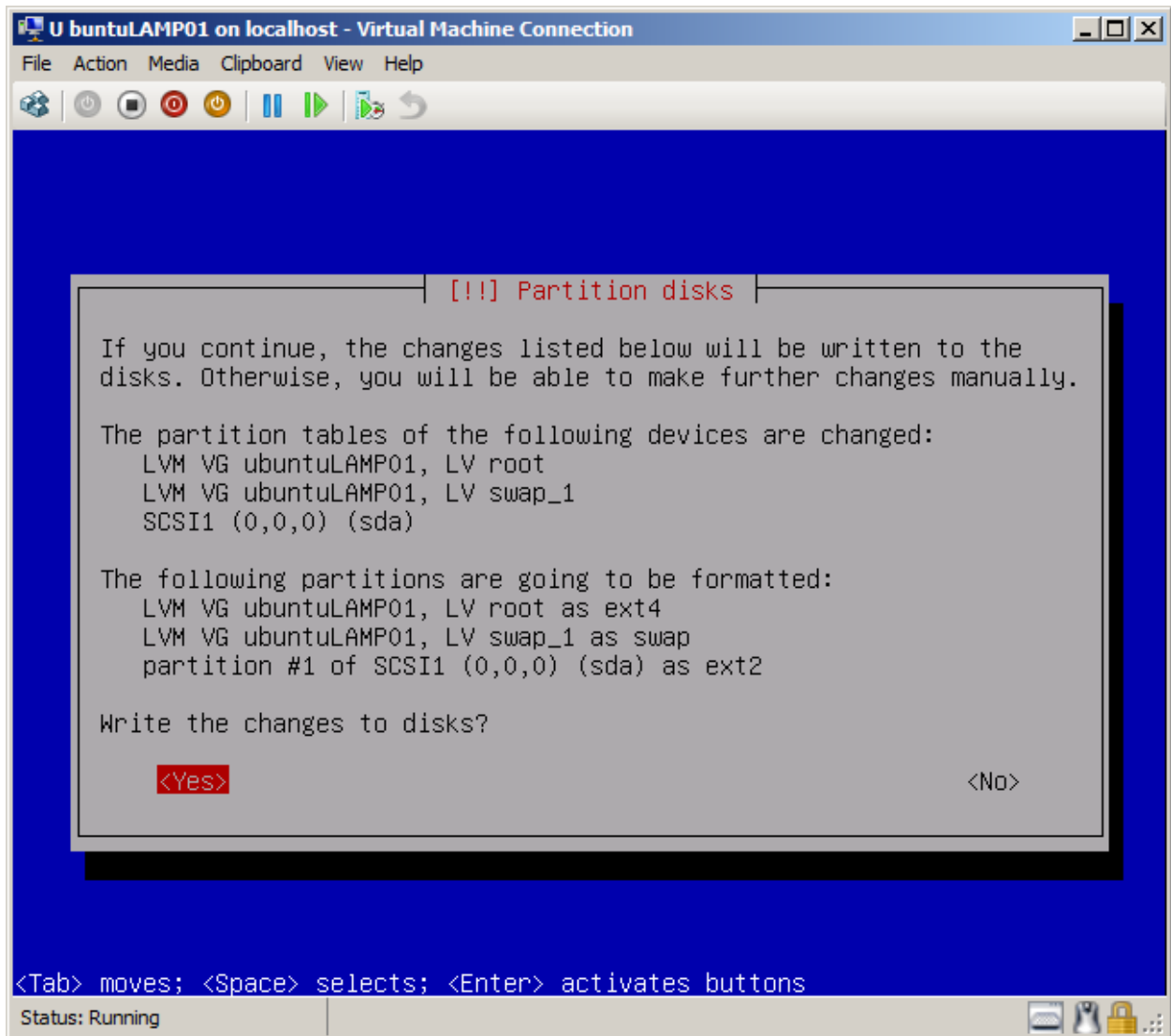
9. When asked to write changes to disks and configure LVM tab over to YES and hit return. Do not leave the default NO selected or you will go back to a previous screen.

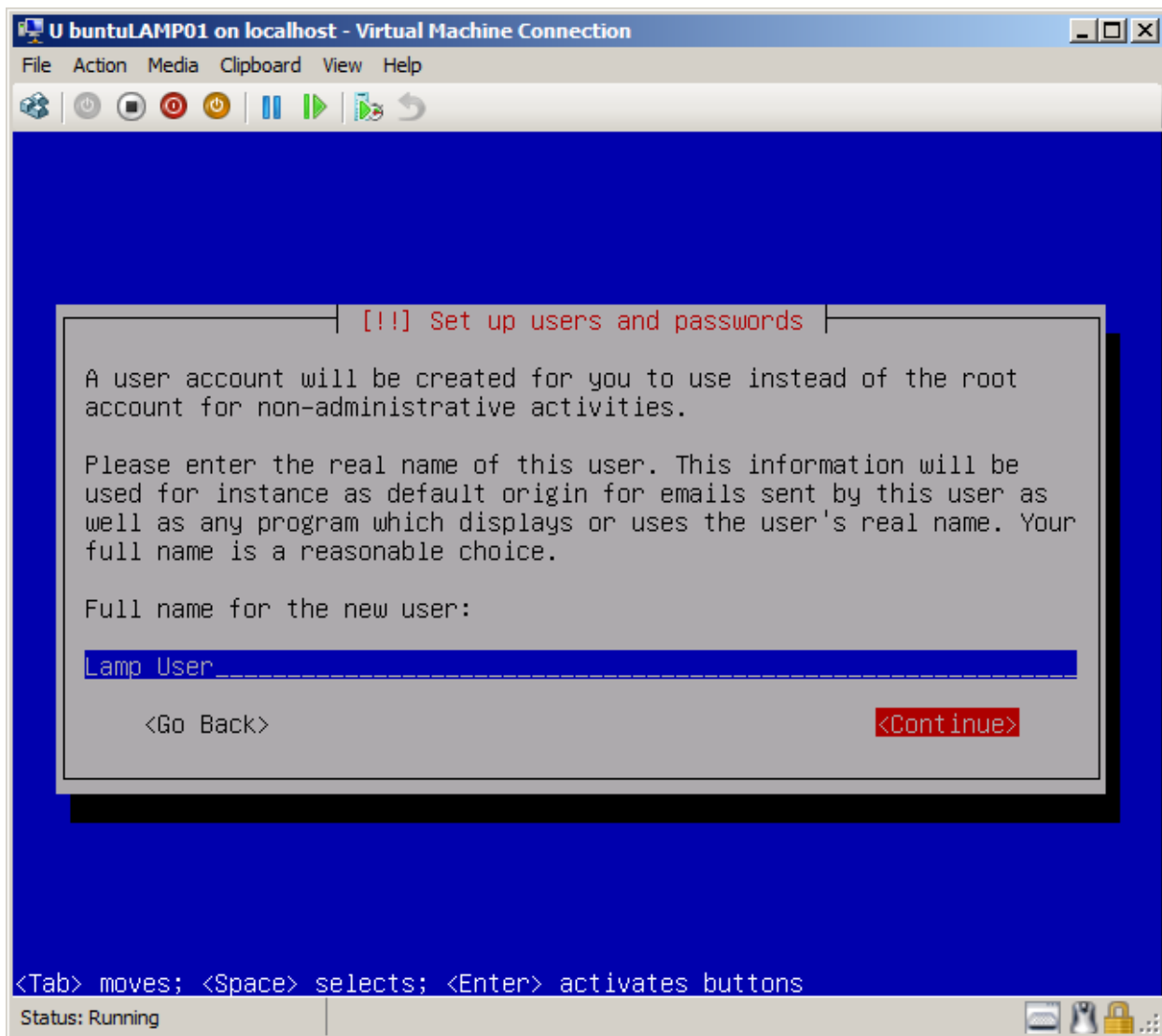


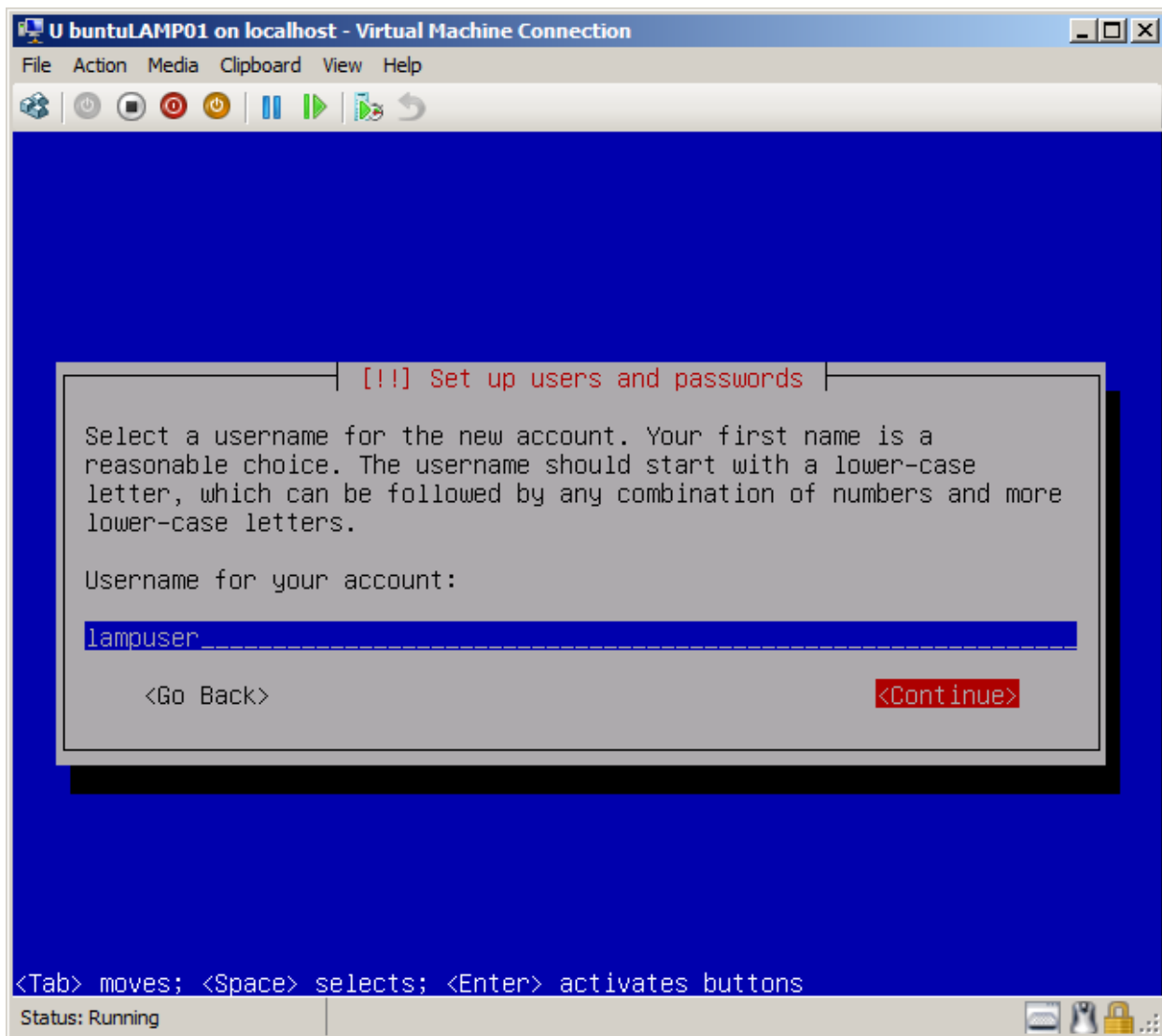


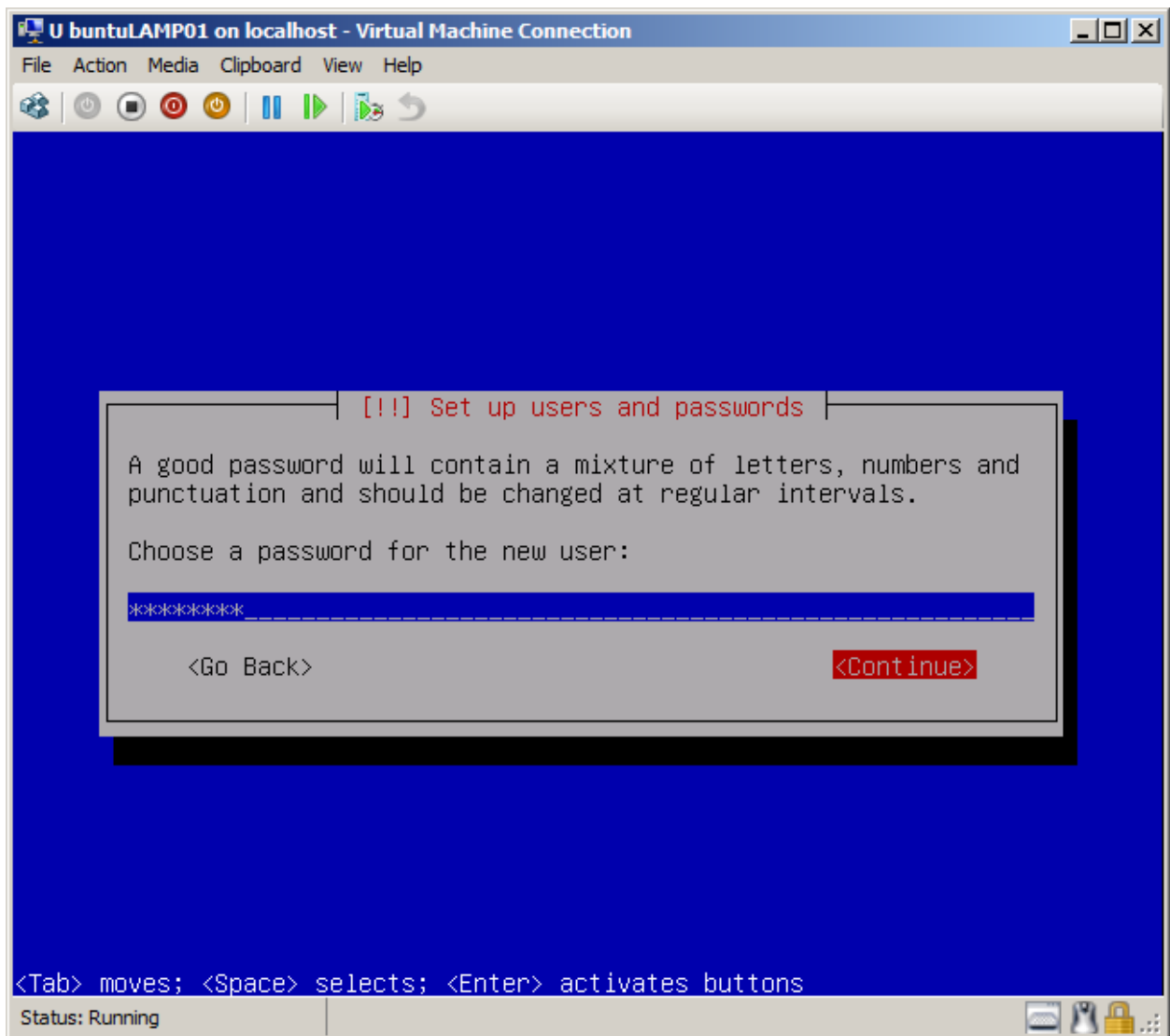


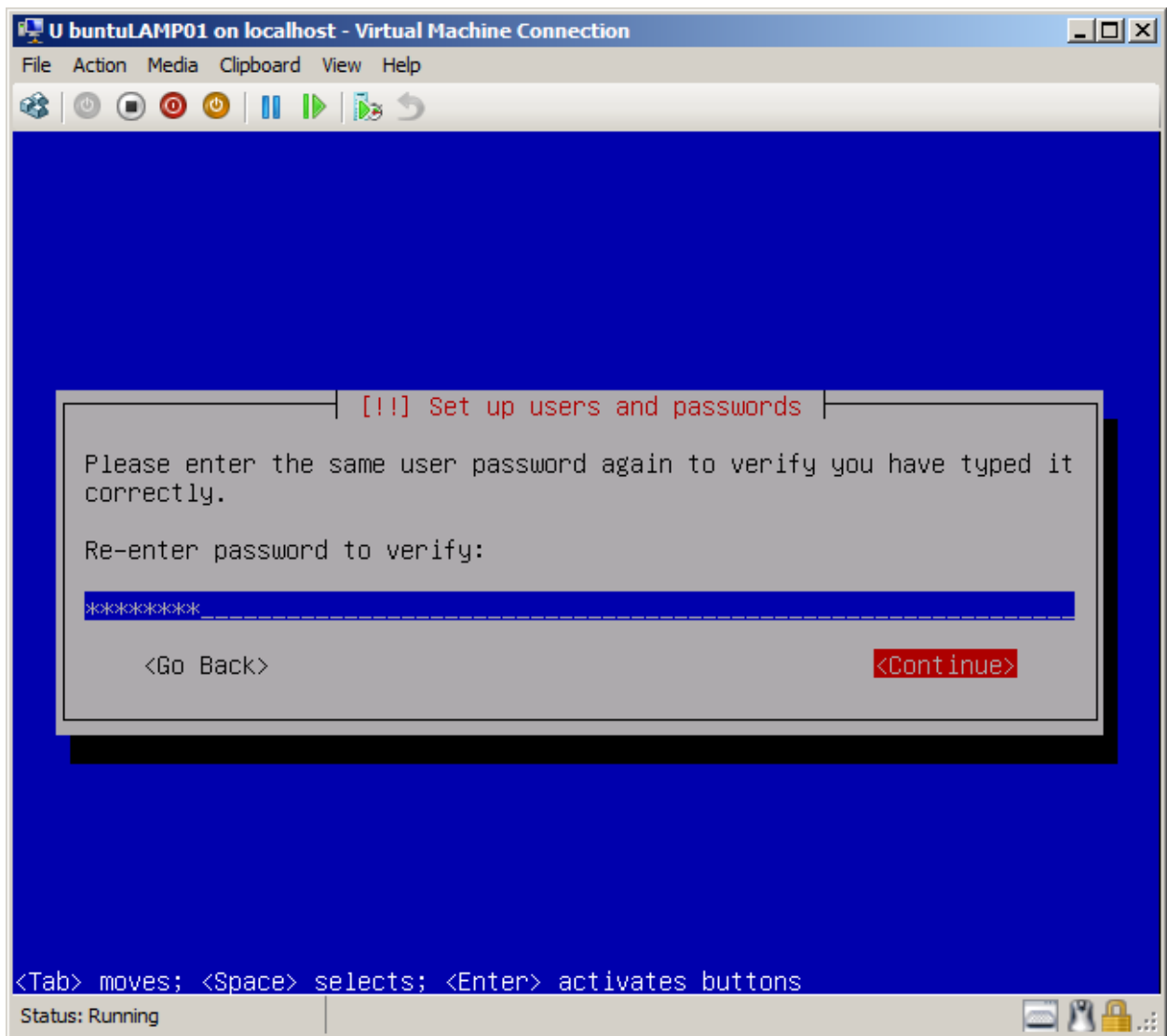
10. Again tab over from the NO and select YES

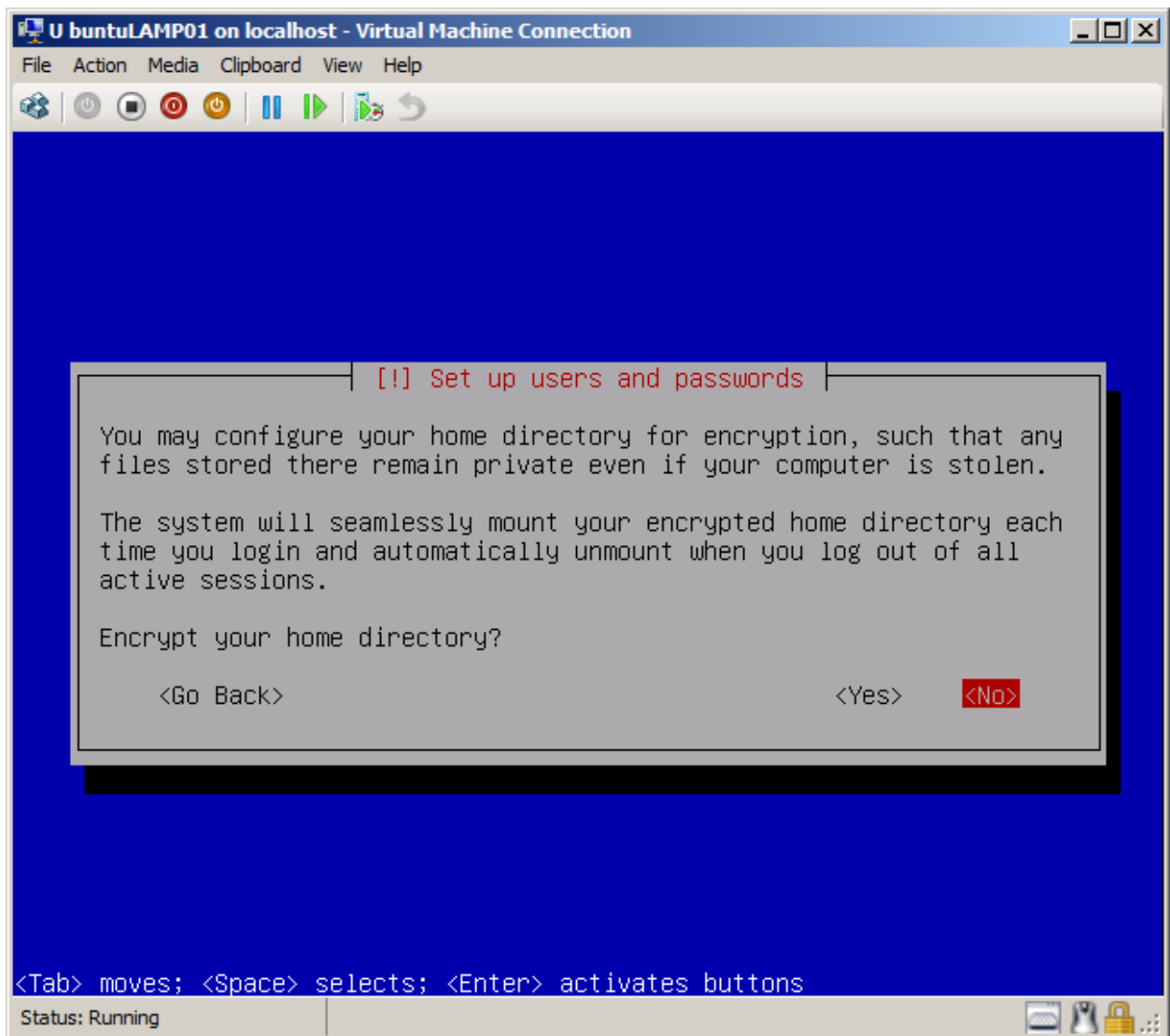


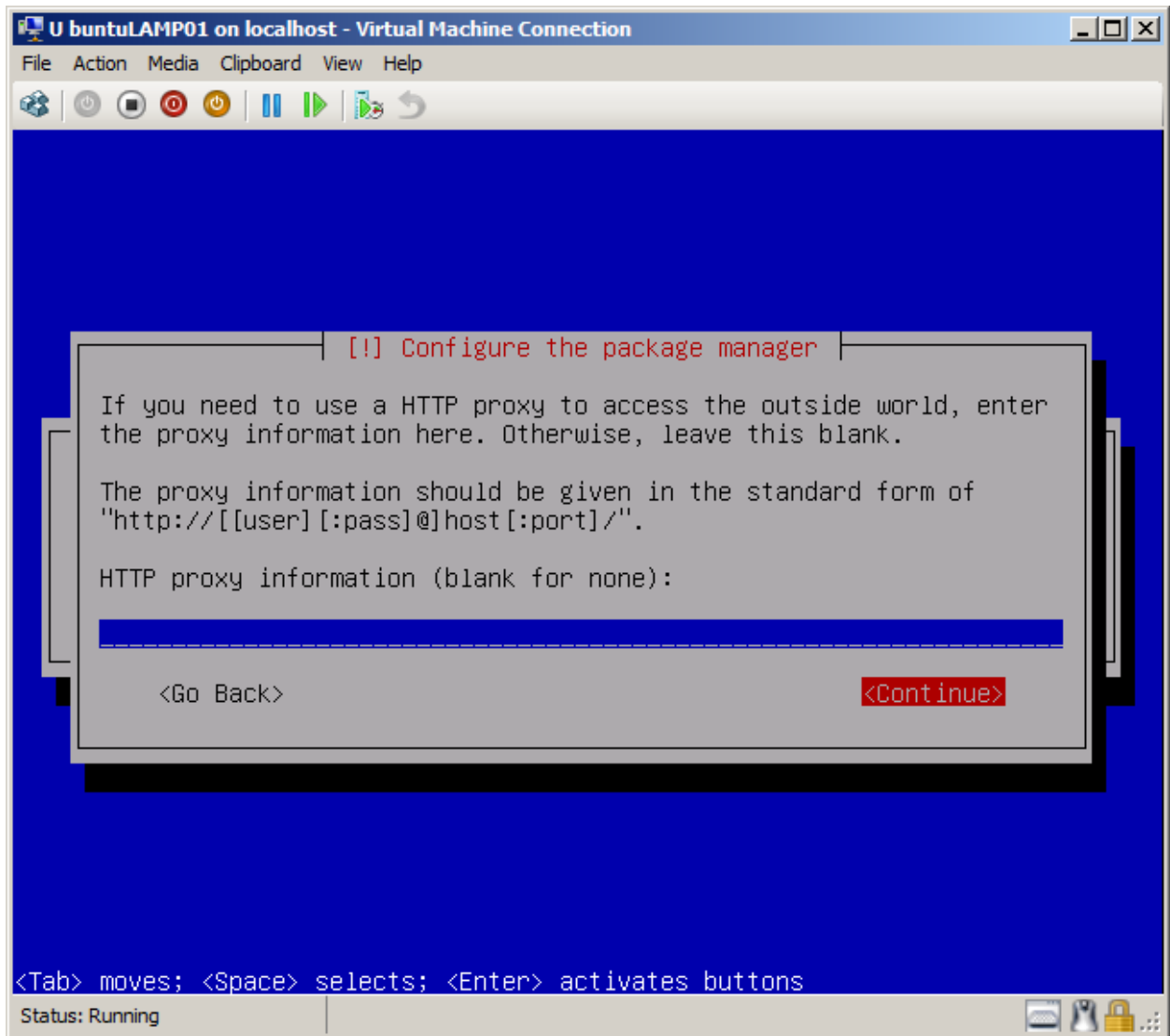


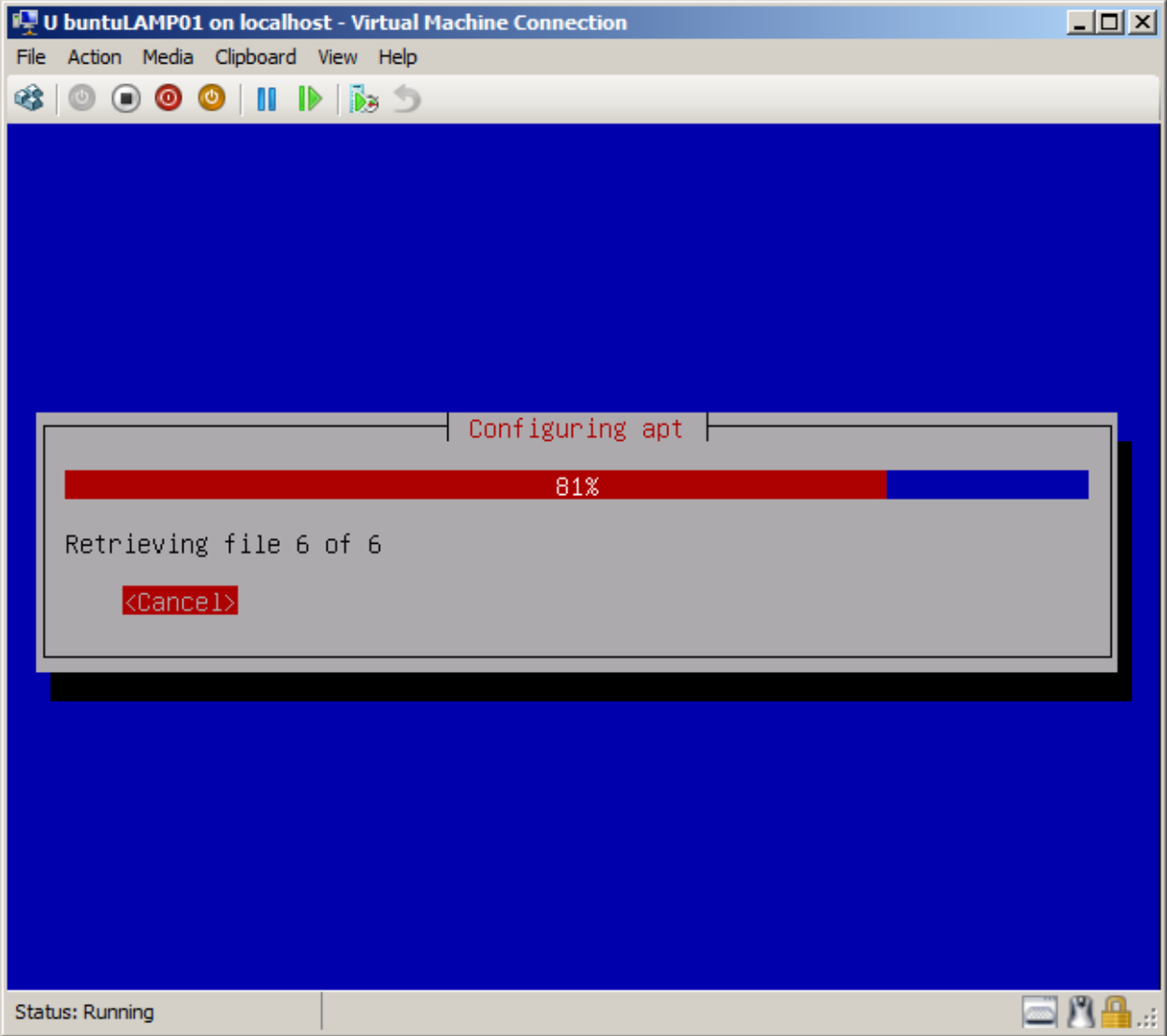




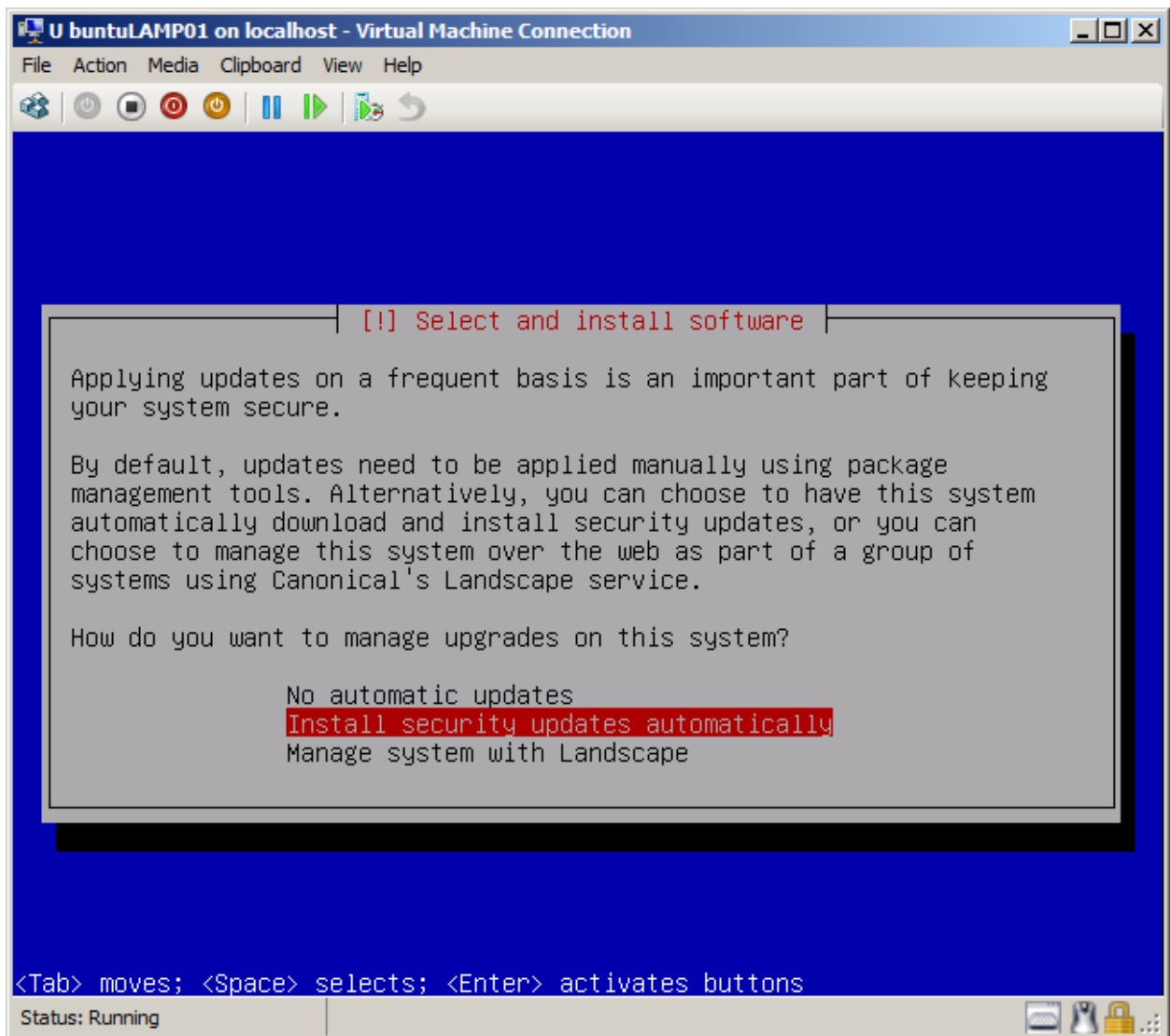




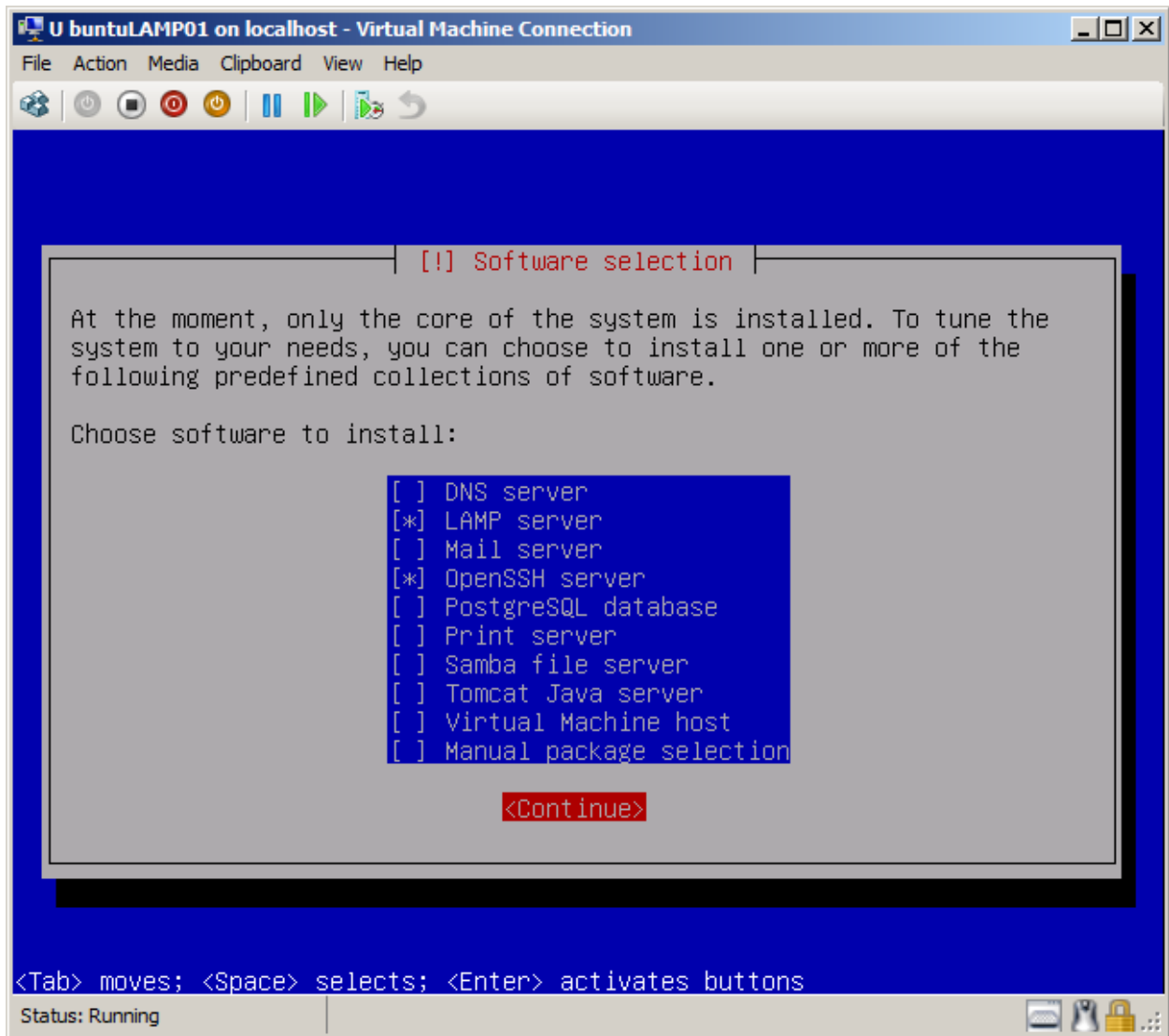


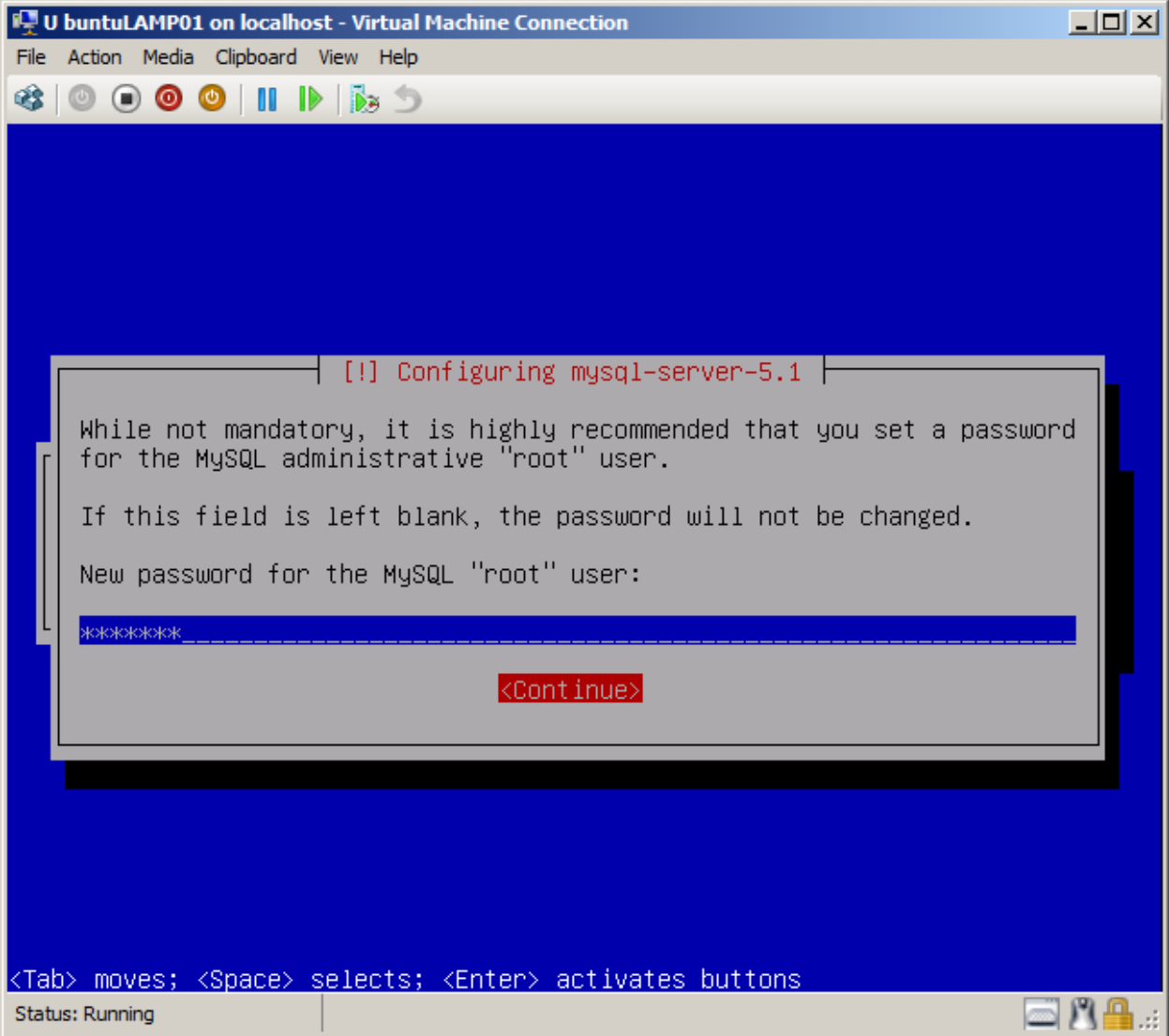


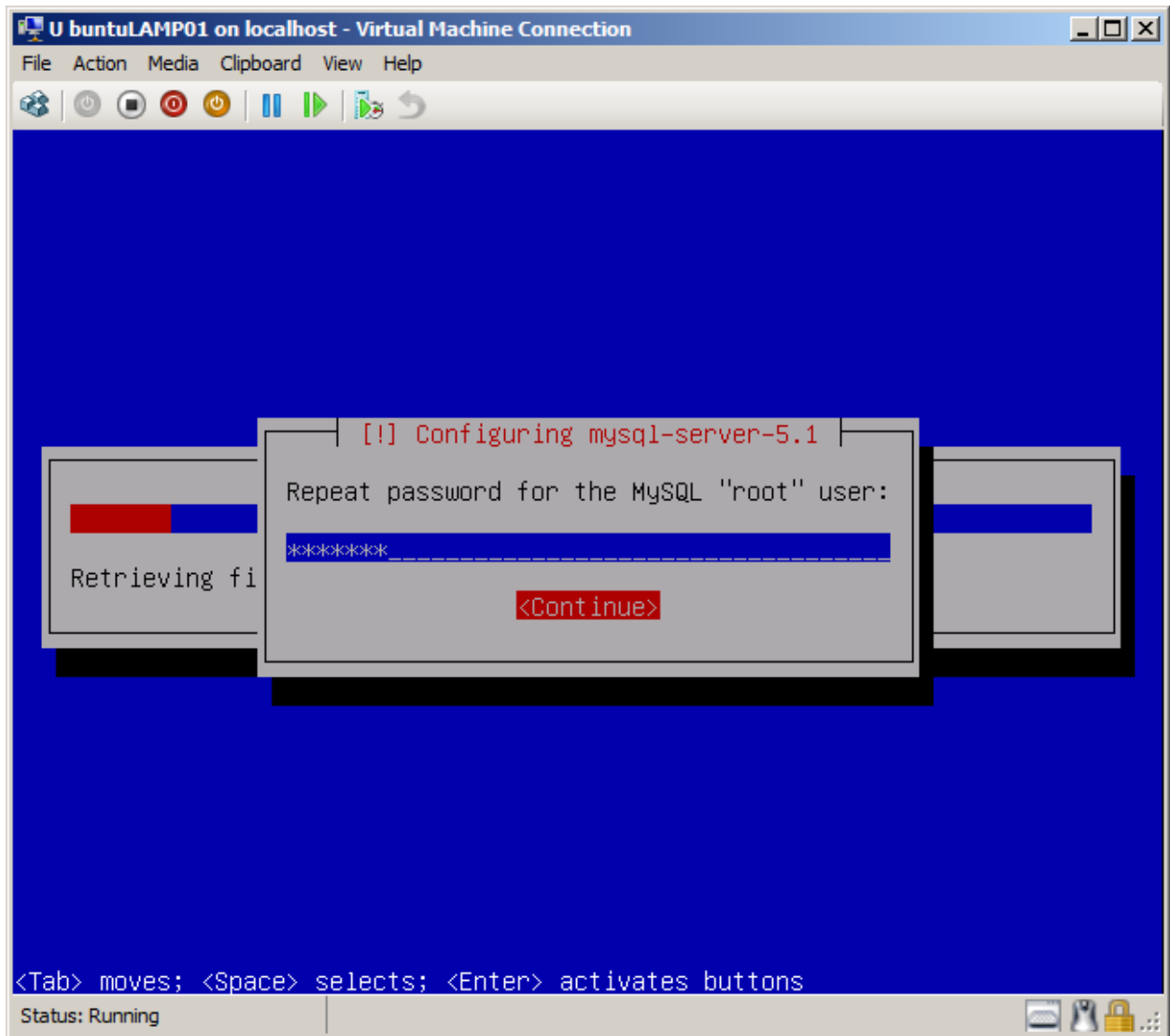




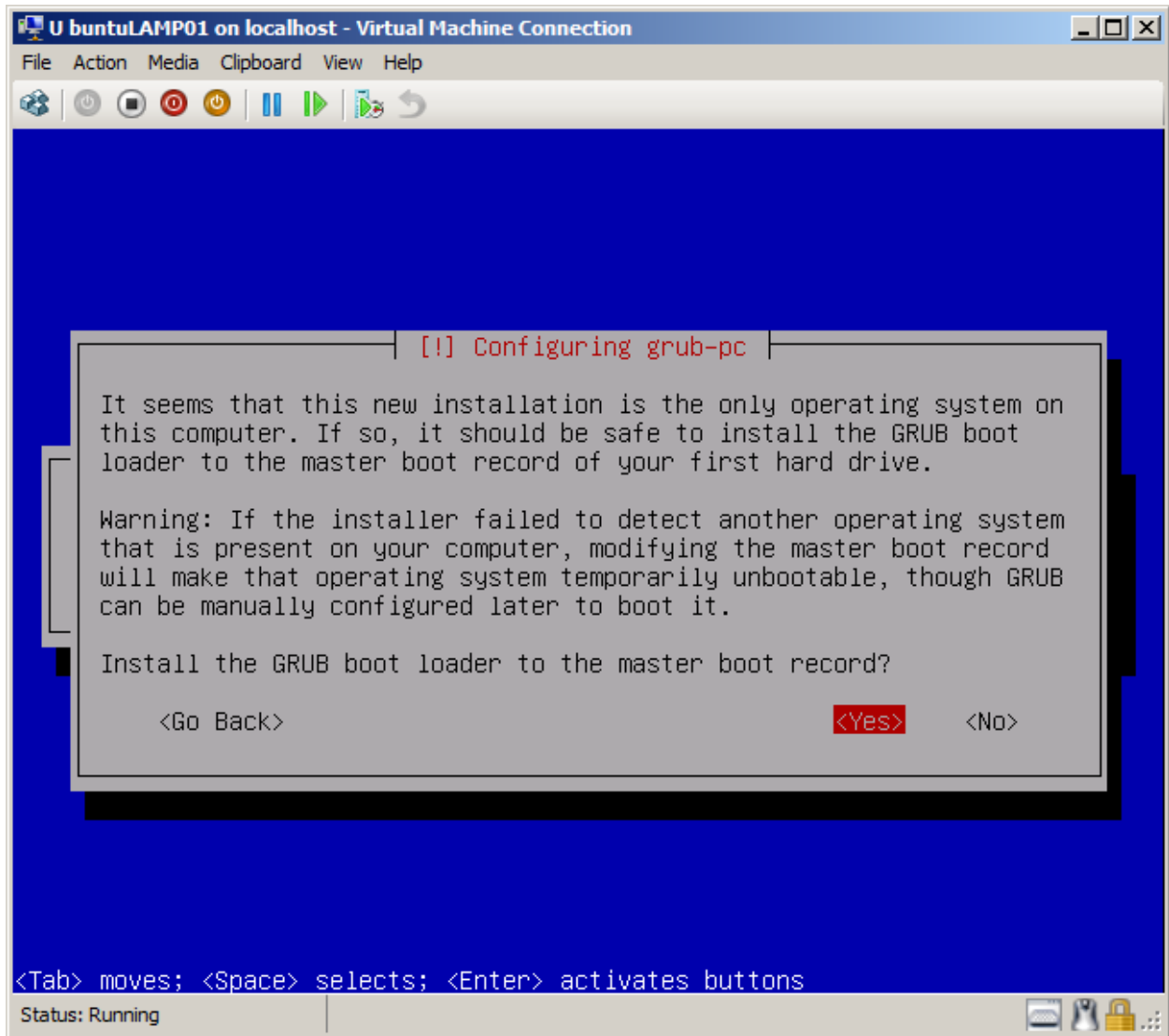
11. To create a LAMP server you will have to select LAMP server. You should also select OpenSSH server if you want to manage your Ubuntu server from another computer. Selections are made by using the Arrow Keys and hitting the Space key whenever your selection is highlighted. The tab key moves you to the Continue button. Finally when you have made your selections hit Enter to install your selections.



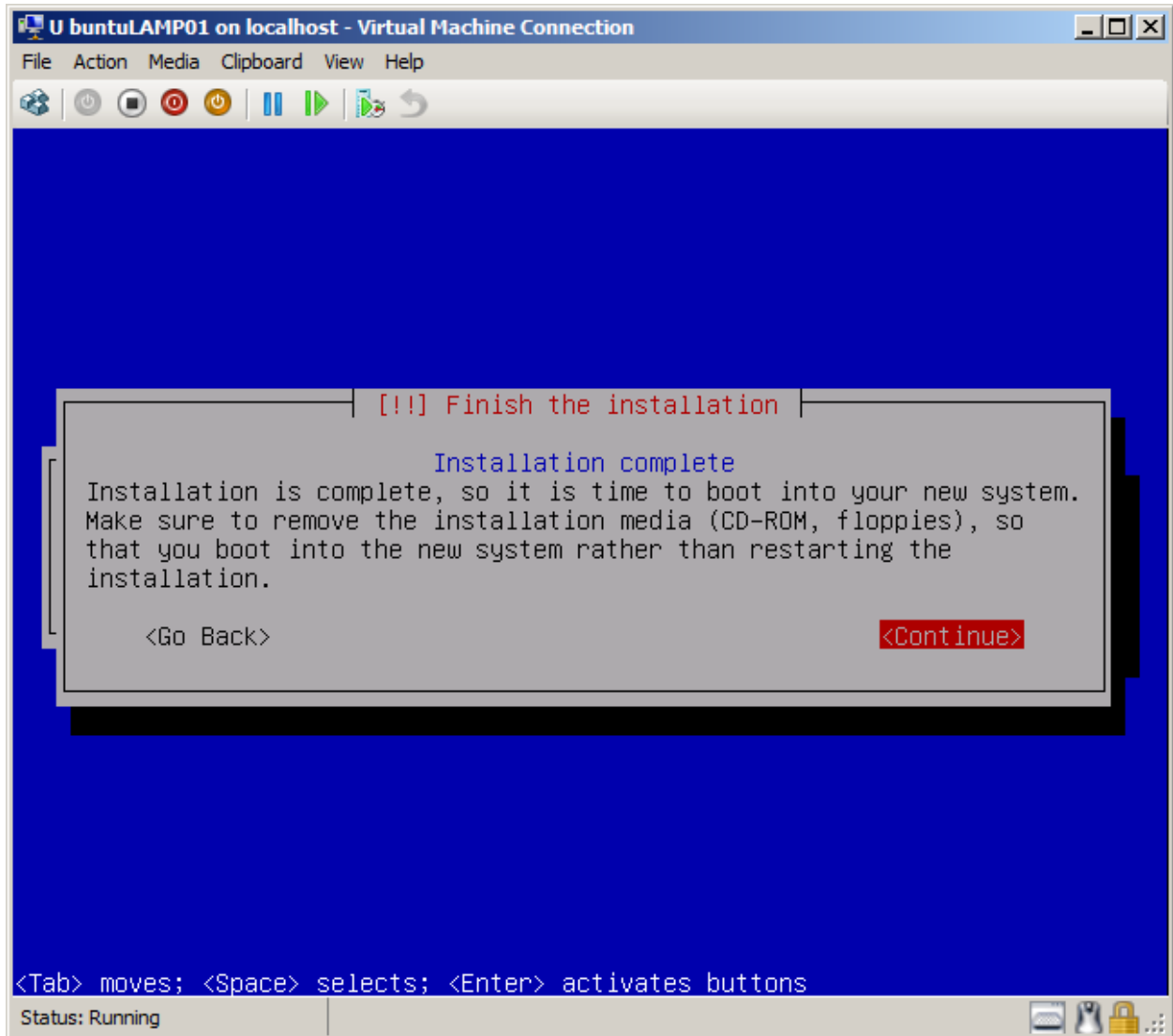




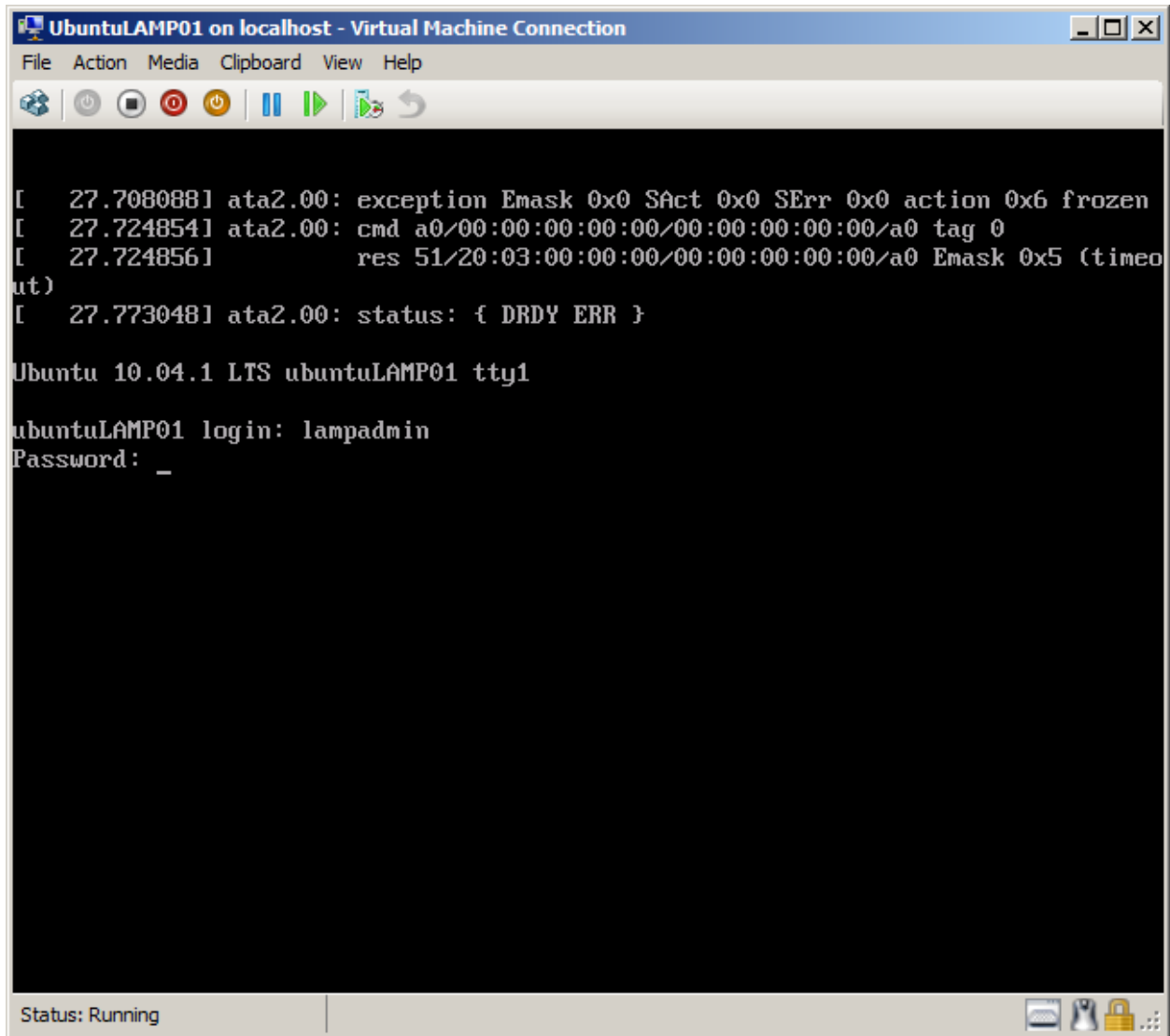
12. Select YES to install the GRUB boot loader



13. Click on Continue to finish the installation.



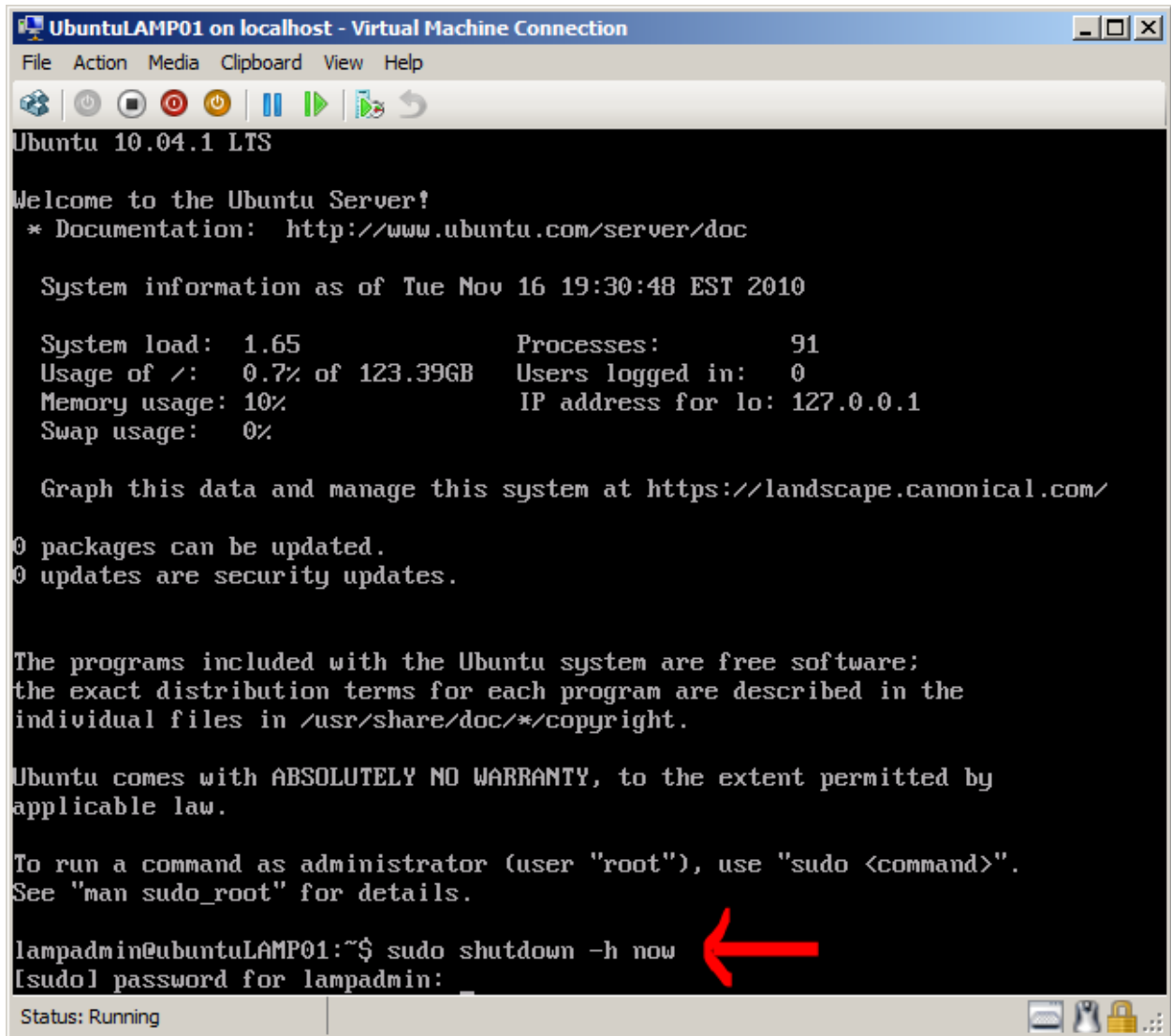
14. You should now have a running Ubuntu server that you can log in. Of course it scrolls slowly, is not integrated with Hyper-V and has no network connections. How to configure all that will come in the next set of lessons.



```
File Action Media Clipboard View Help
[ 27.708088] ata2.00: exception Emask 0x0 SAct 0x0 SErr 0x0 action 0x6 frozen
[ 27.724854] ata2.00: cmd a0/00:00:00:00:00/00:00:00:00:00/a0 tag 0
[ 27.724856]          res 51/20:03:00:00:00/00:00:00:00:00/a0 Emask 0x5 (timeo
ut)
[ 27.773048] ata2.00: status: { DRDY ERR }
Ubuntu 10.04.1 LTS ubuntuLAMP01 tty1
ubuntuLAMP01 login: lampadmin
Password: _
```

Status: Running

15. You can shut down your virtual Ubuntu server by using the command `sudo shutdown -h now` and then supplying your password.



```
UbuntuLAMP01 on localhost - Virtual Machine Connection
File Action Media Clipboard View Help
Ubuntu 10.04.1 LTS
Welcome to the Ubuntu Server!
* Documentation: http://www.ubuntu.com/server/doc

System information as of Tue Nov 16 19:30:48 EST 2010

System load: 1.65          Processes:          91
Usage of /: 0.7% of 123.39GB  Users logged in:  0
Memory usage: 10%         IP address for lo: 127.0.0.1
Swap usage: 0%

Graph this data and manage this system at https://landscape.canonical.com/

0 packages can be updated.
0 updates are security updates.

The programs included with the Ubuntu system are free software;
the exact distribution terms for each program are described in the
individual files in /usr/share/doc/*/copyright.

Ubuntu comes with ABSOLUTELY NO WARRANTY, to the extent permitted by
applicable law.

To run a command as administrator (user "root"), use "sudo <command>".
See "man sudo_root" for details.

lampadmin@ubuntuLAMP01:~$ sudo shutdown -h now
[sudo] password for lampadmin:
Status: Running
```